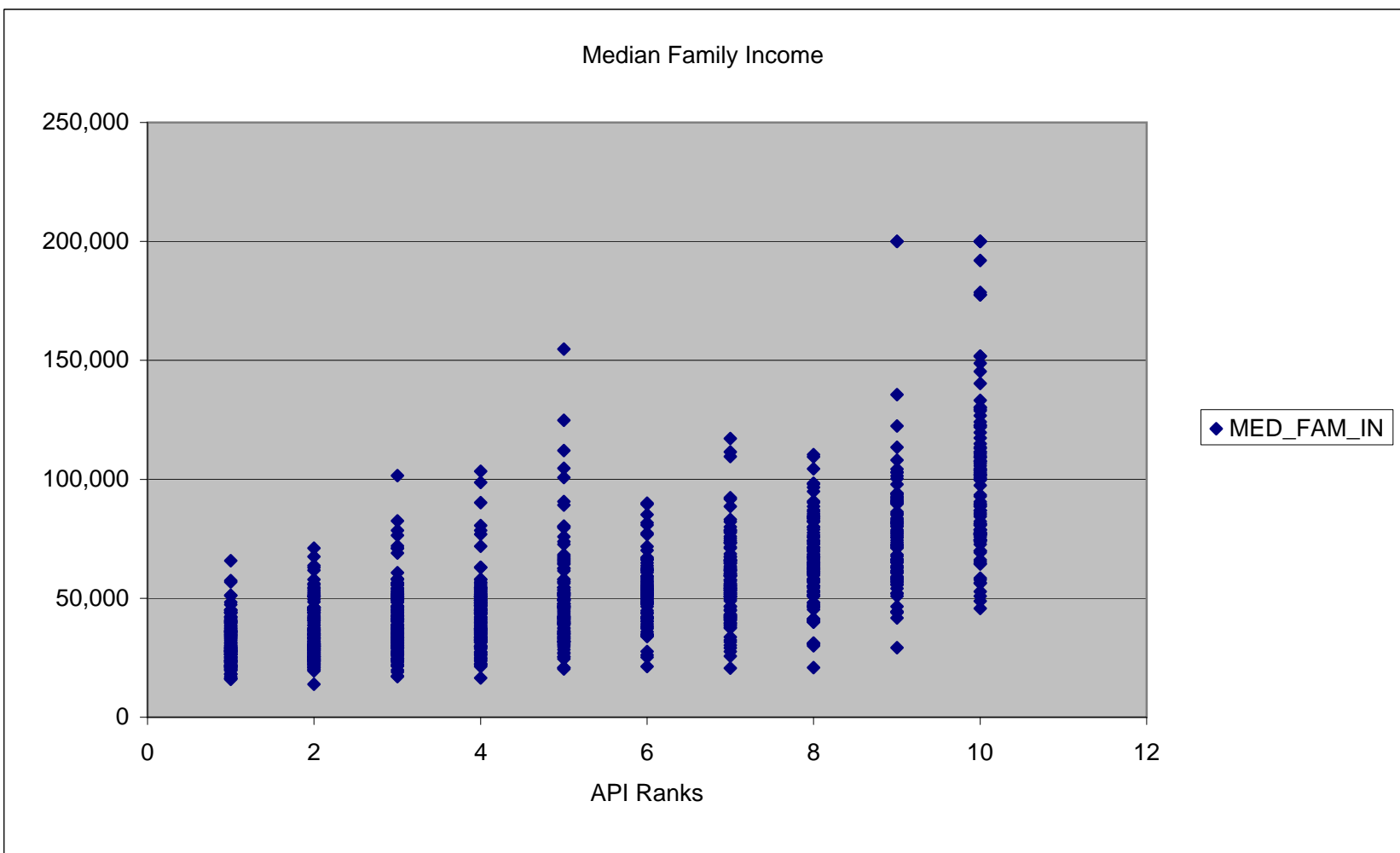


Comparison of Child Care and Development Availability by API Scores and Income in Los Angeles County

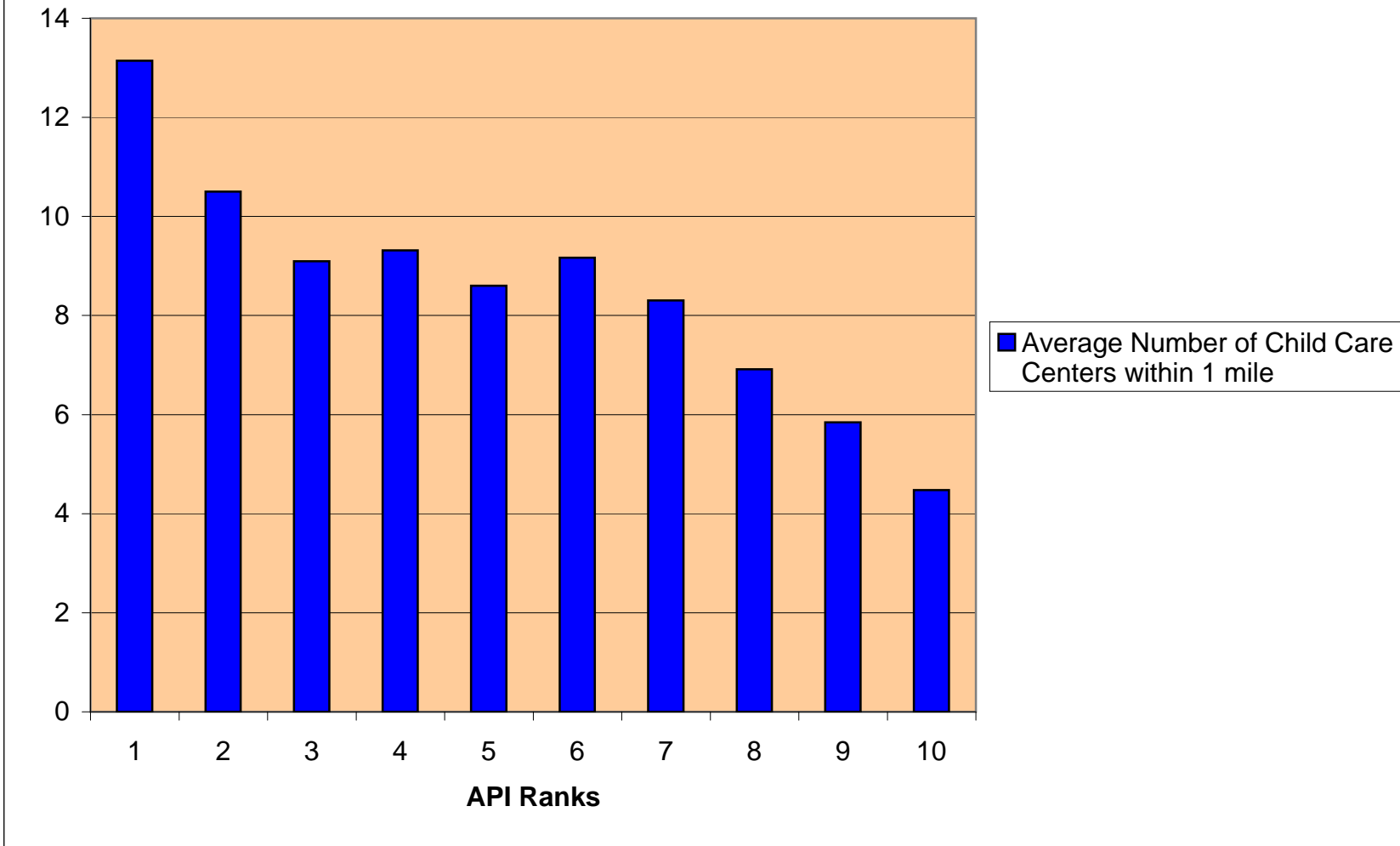
Chart 1 Displays median family income by census tract compared with the Academic Performance Index (API) of the schools. The curve of income levels is correlated with the higher API ranks. Example: highest average income levels are found in tracts with cschools with high API scores.

Chart 2 Displays the number of child care and development centers within one mile serving preschool-age children compared with the API of the schools. (The child care centers include Head start, State preschool, etc.) There is a negative correlation; there are, on average, more opportunities for preschool in areas where the API scores are low. Example: There are on average 13 centers within a mile radius in areas where the API scores are 1.

Clearly there is a link between income and academic performance. It also appears that while the need for early education remains in the low income communities (with low API), preschool experience alone is insufficient to overcome the effects of low income and factors related to low income.



Average Number of Child Care and Development Centers within One mile



These charts were developed in 2007 using California API reports and Community Care Licensing data.