

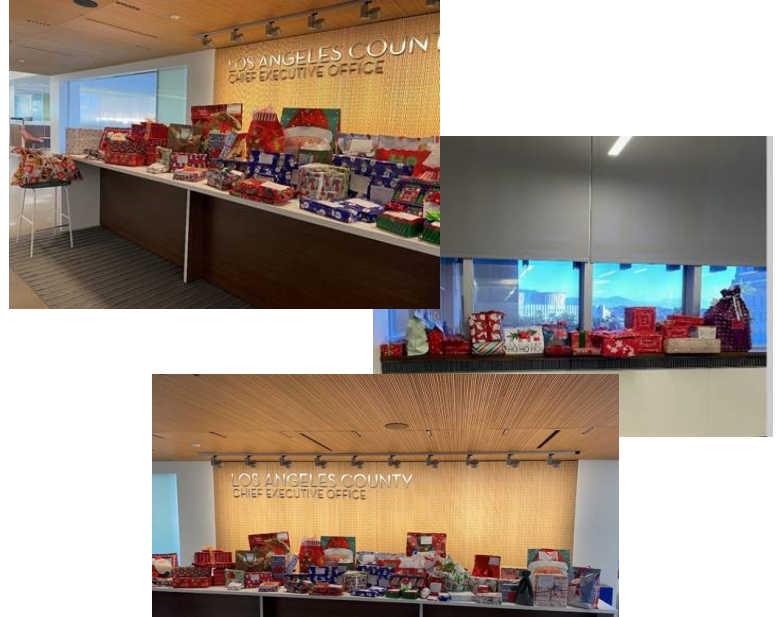
## CEO, Office of the CIO Adopt-a-Family

2020 has been a difficult year with the COVID-19 pandemic affecting the entire world. This is why programs like the Los Angeles County, Department of Public Social Services' (DPSS) annual **Adopt-A-Family Program** is **more important than ever**.

The CEO, Office of the CIO (OCIO) has volunteers for the annual **Adopt-A-Family Program** and **this year wasn't any different**. The Adopt-A-Family Program can assist underserved families during the holiday season. This Program allows the sponsor to determine the amount and type of donations they would like to give.

We are proud to have been a part of this program in 2020. Due to COVID-19, safety measures & precautions had been implemented for delivering the donations in 2020.

[Click here to watch our Adopt-a-Family video](#)



## Countywide Prevention Metrics is Live

Countywide Prevention Metrics (CPM) is a standardized set of metrics that track our progress in achieving the goal of the [Countywide Prevention Plan](#) for every child to be healthy, to be growing and thriving in a strong family, and to be supported by a safe and nurturing community.

CPM was developed by Los Angeles County Office of Child Protection (OCP) and the Los Angeles County Chief Information Office (CIO), in partnership with other County departments, as well as, First 5 LA, USC's Children's Data Network, and other key stakeholders. The report is available on the County Open Data Portal at this link: <https://data.lacounty.gov/stories/s/tyvf-vhpc>.



*CEO, Office of the CIO virtually wishes you a Happy & Safe Holiday Season!*

