

Pretrial detention is harmful

- Pretrial detention harms people's mental health
- Black people are disproportionately locked up pretrial, with higher bail amounts than their white counterparts
- During COVID-19, the length of pretrial detention has increased, especially for Black people
- Pretrial detention impacts people's jobs, housing, ability to parent, and much more

CREATING A NEEDS-BASED PRE-TRIAL RELEASE SYSTEM:

THE FALSE
DICHOTOMY OF
MONEY BAIL VERSUS
RISK ASSESSMENT
TOOLS

2020

Authors: Alicia Virani, Rodrigo Padilla-Hernandez, Tali Gires, Kaitlyn Fryzek, Rachel Pendleton, Ethan Van Buren, & Máximo Langer*



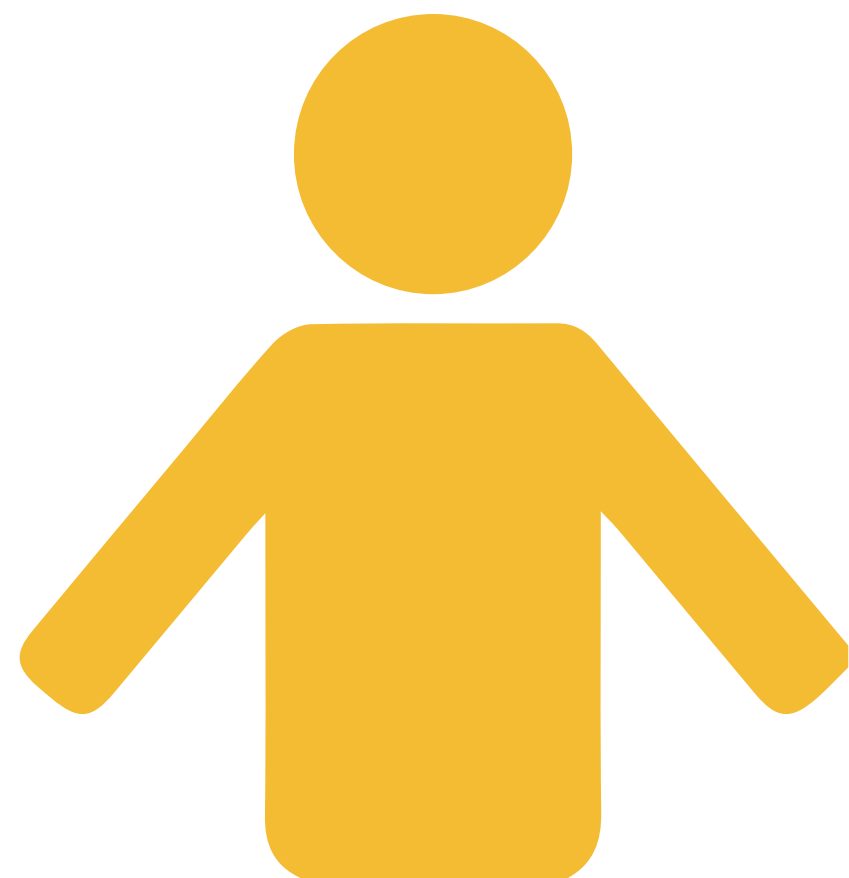
UCLA School of Law, Criminal Justice Program

UCLA School of Law Bail Practicum, Fall 2019

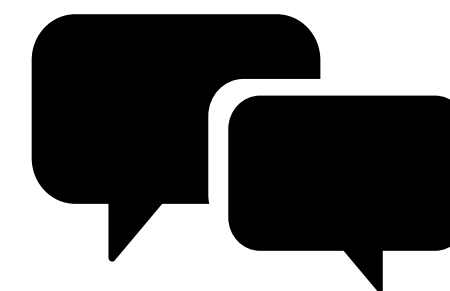
THE "CASA" MODEL--A FOUNDATION OF CARE

- Supportive resources over supervision
- Trauma-informed approach
- Individual empowerment & self determination

**Housed within an independent
pretrial agency**

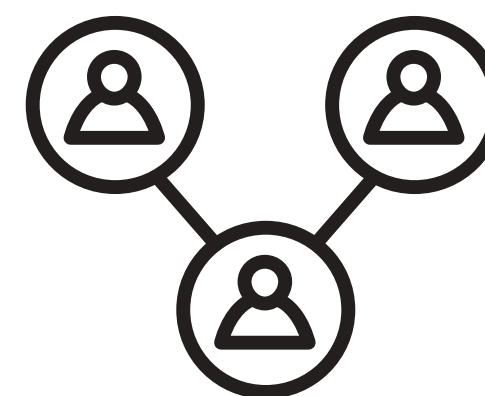


CASA



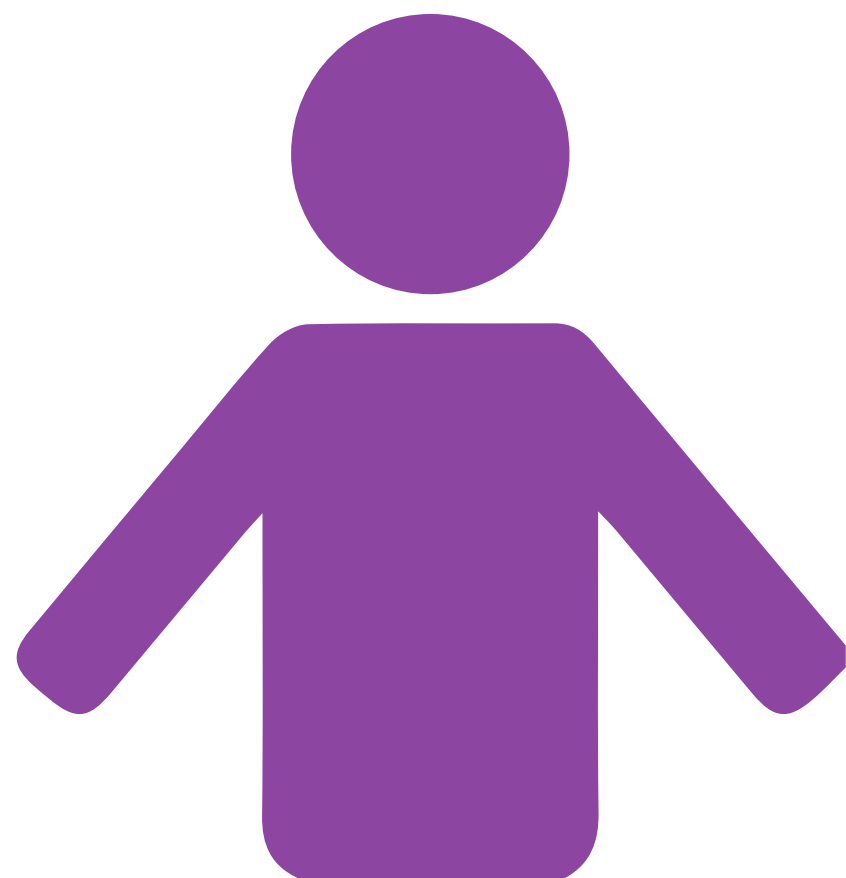
Court date
reminders

Emergency day-of court
support

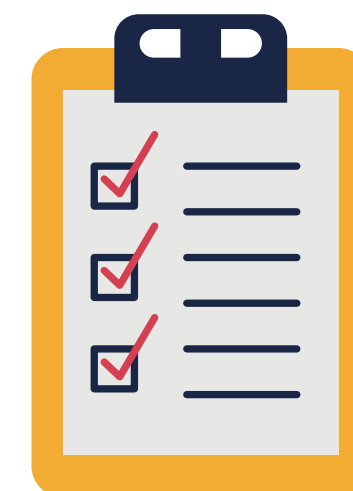


Linkage to
supportive
resources if
needed

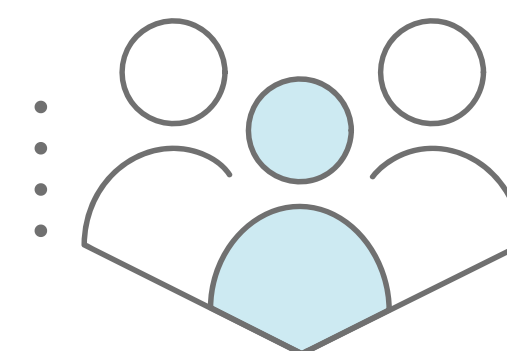
Alice was stopped by a police officer for an alleged misdemeanor assault. The officer writes her a citation with a date to go to court. The officer also gives her information about CASA



CASA



Strengths & needs assessment within 8 hours



Individualized plan created



Jeremy can fight his case from the outside

Jeremy is arrested for an alleged felony assault with a deadly weapon. Jeremy is booked into custody. The Sheriff sets a bail amount that Jeremy cannot afford.

Other elements of the CASA

- Systems impacted sponsors
- Confidentiality
- Community Response Center
- Transparency and data collection