



**Youth Justice Reimagined &
Youth Centers**

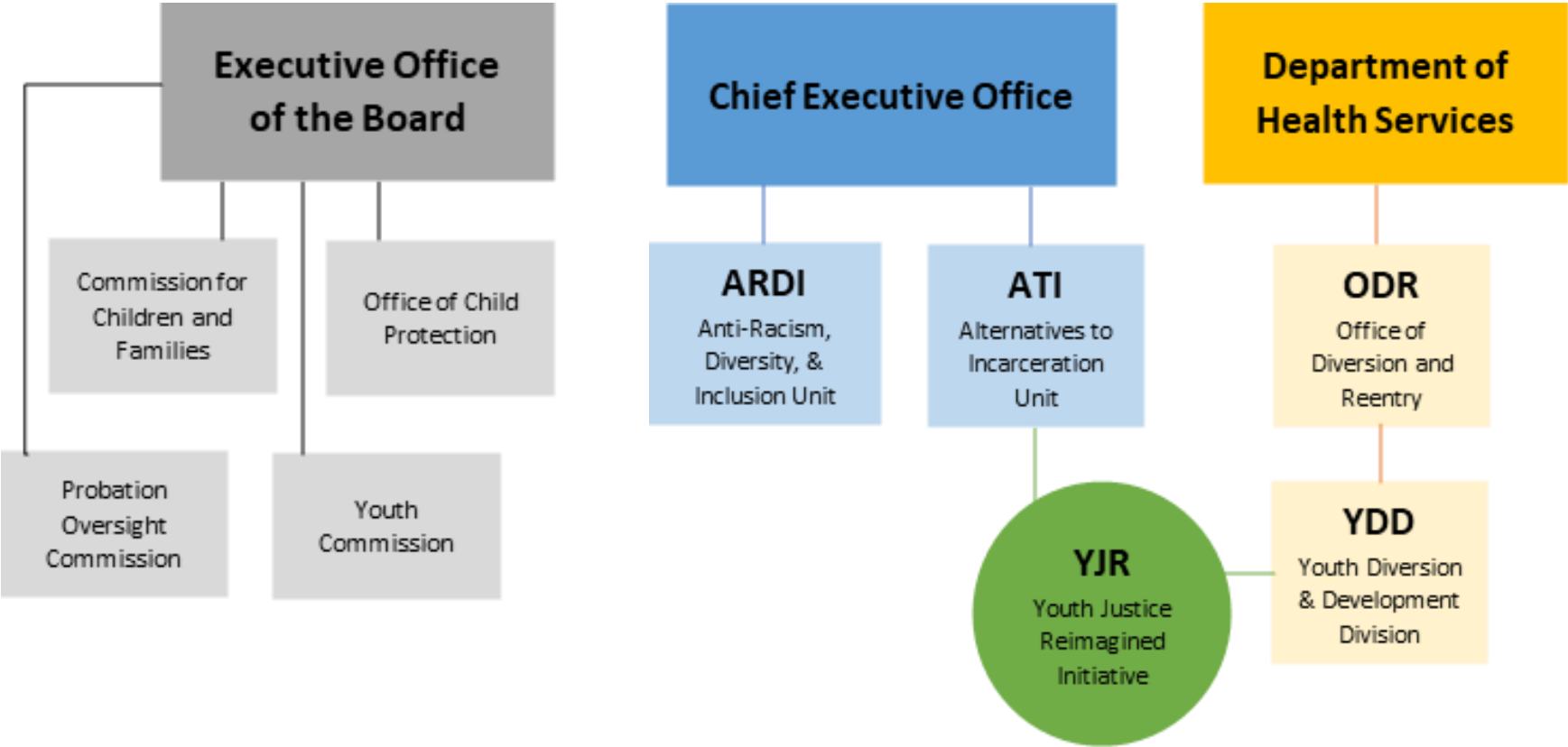
LOS ANGELES COUNTY'S MODEL FOR YOUTH DIVERSION AND DEVELOPMENT (YDD)

- Health Agency contracts with community-based providers for countywide network of youth diversion / development services
- Referrals from law enforcement are pre-arrest / pre-booking, including higher level offenses
- Youth get strengths-based assessment, holistic individualized care plan, and graduated case management



YDD & Youth Justice Reimagined (YJR)

Mapping Los Angeles County Youth Justice Transformation Initiatives



Youth Justice Reimagined

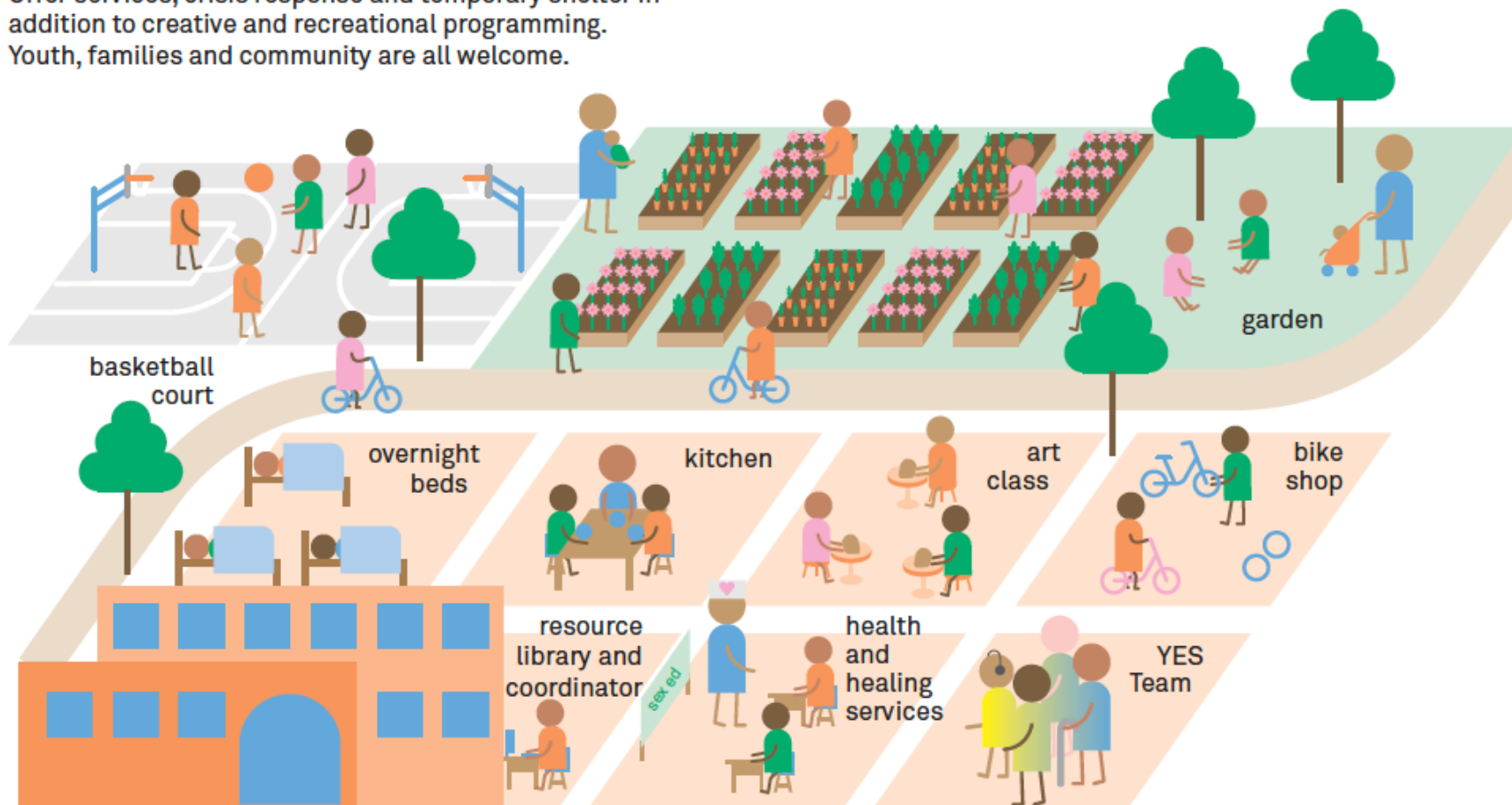
In August 2019, the Los Angeles County Board of Supervisors' unanimously adopted a motion to establish the Youth Justice Work Group (YJWG), to do the work needed to **reimagine a youth justice system rooted in healing and wellbeing, racial equity and Youth Development.**

In November 2020, the Los Angeles County Board of Supervisors unanimously approved the values, vision, and recommendations presented by the Youth Justice Work Group (YJWG), now known as **Youth Justice Reimagined (YJR)**, and committed to transitioning the County's youth justice system to the care-first model outlined in the YJR report by 2025; and supporting the continued planning and collaboration required to make the model a reality, including a establishing a new Department of Youth Development.

In July 2021, the Youth Justice Advisory Group (YJAG) was first convened to develop concrete collaborative plans for implementation, building on the work of the YJWG.

24-hour Youth and Community Centers

Offer services, crisis response and temporary shelter in addition to creative and recreational programming. Youth, families and community are all welcome.



YJAG Recommendations and Visions on Youth Centers

- Begin to plan for, fund, and implement 24-hour Youth Centers by leveraging and expanding existing community resources
- As with YDD Regions, the Youth Centers should first be developed in locations with the greatest amount of violence and youth arrests to ensure these communities get the wanted and needed resources, particularly in areas of the County with few available resources for youth.
- Leverage existing providers to scale up and provide services and build up new providers. Begin with an assessment of all youth-serving organizations who have a connection to housing.
- Promote community investment by leveraging existing resources and repurposing existing assets in communities for these centers when possible, such as using empty lots and buildings, unused County buildings, and spaces formerly used by law enforcement and probation. Design and build new physical centers where needed. Work with YJAG consulting group, Designing Justice Designing Spaces (DJDS), to build on their initial research and recommendations.
- Centers should be located in each YDD Region and should be accessible and embedded within communities such as community centers, parks, housing centers, etc, uplifting and centering the local culture.
- Contracts with local eateries will provide a steady source of free food for youth, and youth will be able to access beds to stay at the centers overnight on a rotating basis.

Next Steps

- Build on initial research from Designing Justice Designing Spaces (DJDS) to hold a workshop and community-feedback processes to develop proposals for initial scope and potential sites for YJR's 24-hour Youth Centers
 - Create a YJAG workgroup for the design and planning of the Youth Centers
 - YDD is already moving forward to implementing some pieces of YDD Expansion plans that would build the infrastructure for the vision and support of Youth Centers
-