

# MdR for All

Community Services Cluster Meeting  
August 3, 2022




*Caring for Our Coast*

# Aligning Marina del Rey with L.A. County Equity Principles

- Motion introduced by Supervisor Holly J. Mitchell on July 12, 2022, and unanimously approved



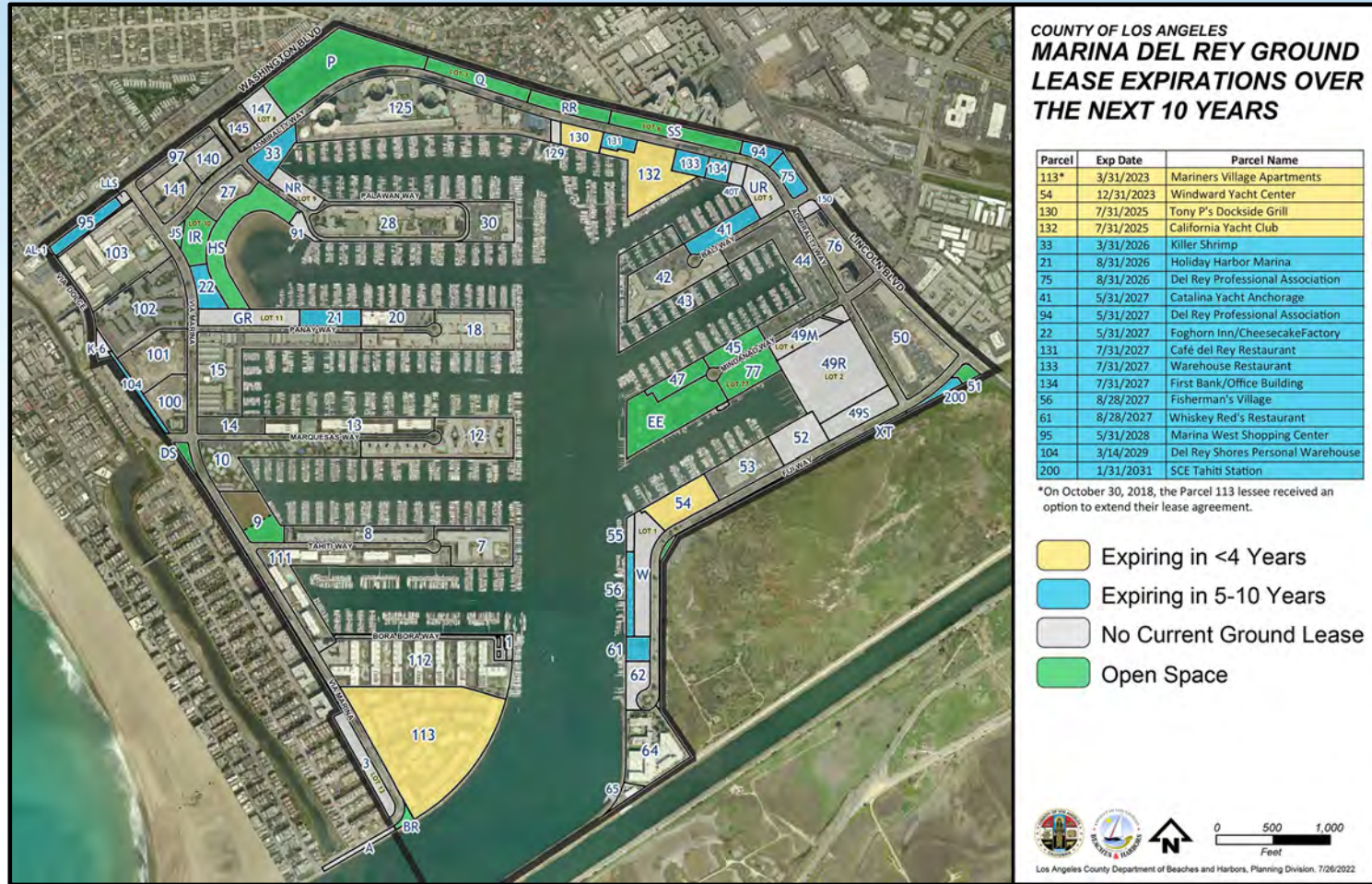
- Upcoming expiration of many leases creates opportunity to take more holistic approach to redevelopment of Marina del Rey (MdR), rather than piecemeal approach
- County priorities of equity and inclusion should be at forefront of this comprehensive approach
- Approach should be guided by 2014 MdR Visioning Statement
- Department of Beaches and Harbors directed to collaborate with other County departments and initiatives as part of process

A photograph of Marina del Rey harbor at dusk or dawn. The water is calm, reflecting the sky. Numerous sailboats are docked at the piers. In the background, the city skyline is visible under a soft, hazy sky. A semi-transparent white box is overlaid on the center of the image, containing text.

Our goal is to increase access and recreational opportunities in Marina del Rey to underserved populations, creating a vibrant community for all while supporting coastal vitality and maintaining environmental stewardship.



# Existing Opportunities



# County Stakeholders

- Department of Beaches and Harbors
- Department of Regional Planning
- Department of Public Works
- Department of Arts and Culture
- L.A. County Development Authority
- L.A. County Poverty Alleviation Initiative
- L.A. County Antiracism, Diversity and Inclusion Initiative





# Other Stakeholders



- Boaters
- Business owners
- Labor
- Lessees
- MdR Tourism Board
- Recreational users
- Residents

# Upcoming Deadlines

- September 12, 2022: Provide recommendations for the completion of an assessment that identifies urgent community needs that can be strategically addressed in MdR.
- January 12, 2023: Provide recommendations for the completion of a comprehensive plan for the best and highest use of real estate and water assets in MdR
  - As part of this report, provide any additional recommendations for an equitable, holistic, long-term land use plan for MdR that promotes the priorities identified in the 2014 Visioning Statement





# Questions?

Project website (draft):  
[beaches.lacounty.gov/  
marina-equity](https://beaches.lacounty.gov/marina-equity)

**Gary Jones**

Director

[gjones@bh.lacounty.gov](mailto:gjones@bh.lacounty.gov)

**Amy Caves**

Acting Chief Deputy Director

[acaves@bh.lacounty.gov](mailto:acaves@bh.lacounty.gov)

**Stefan Popescu**

Special Assistant

[spopescu@bh.lacounty.gov](mailto:spopescu@bh.lacounty.gov)







# LA COUNTY MULTI-USE TRAILS

8/3/22 Community Cluster Presentation

# Historic Trail Corridors in Los Angeles County

Trail alignments in the County have been used for centuries as migration and trading routes by indigenous people groups and early settlers



California Missions Resource Center



California Missions Resource Center



# COUNTY REGIONAL TRAIL SYSTEM

**233 MILES**

Existing Trails

Soft surface, **multi-use** trails  
for hikers, bikers &  
equestrians

**734 MILES**

Planned Trails\*

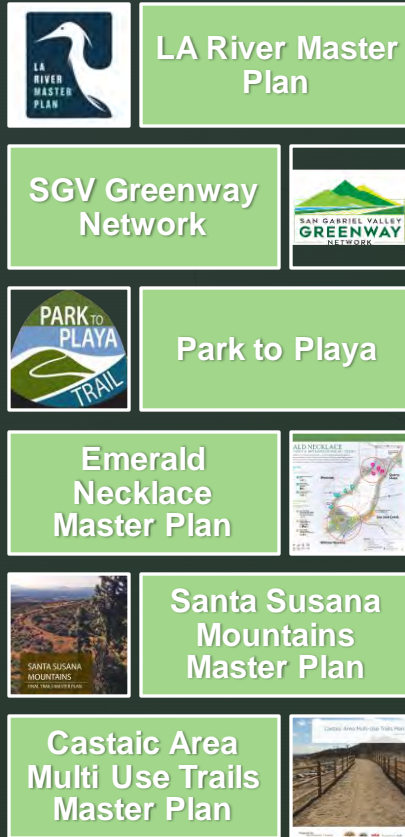
**343 TRAILHEADS**

**20 EQUESTRIAN  
FACILITIES**

\*Adopted in the County General Plan



# Future Trail Network Expansion





# Trail Network Expansion

**Identify and close gaps in regional trail network to ensure equitable access to the County's diverse trail system**

Compton Creek  
Schabarum-Skyline  
San Jose Creek  
Altadena Crest Trail

**Utilizing Regional Parks as Staging Areas to access the Countywide Trail System**

Bonelli Regional Park  
Peter F. Schabarum Regional Park  
Eaton Canyon Natural Area  
Whittier Narrows Recreational Area and Natural Area  
Kenneth Hahn State Recreation Area  
Castaic State Recreation Area  
Future Puente Hills Landfill Park



# Trail Acquisition Methods

## Land Entitlement Process

- Trails are required as a condition of approval in accordance with the regional trail network map adopted in the County General Plan
- Residential subdivisions are required to provide dedicated and improved trails
- CUP's require trail easement dedication only

## Partnerships, Leases & Agreements

- Local Conservancies
- Utilities & Railroads

## Private Property

- Easements (most common) or Fee Simple
- Purchase or Donation







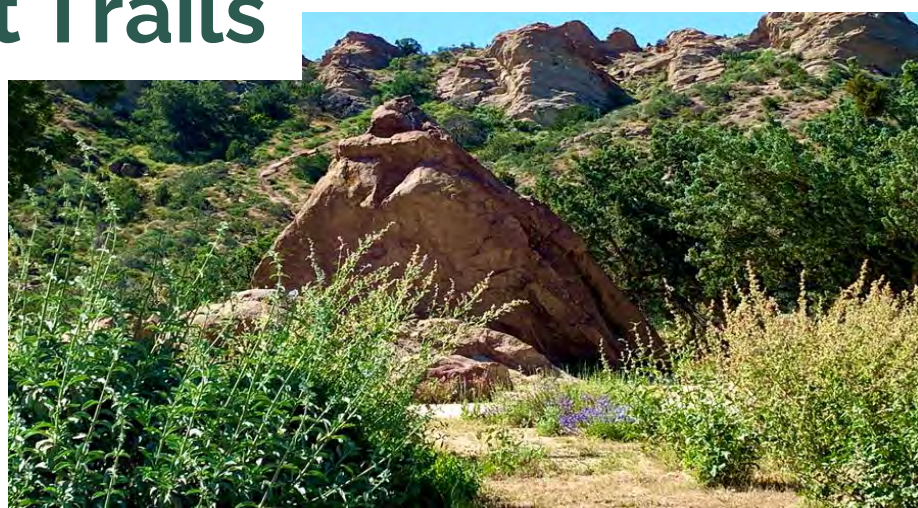
## River & Channel Adjacent Trails



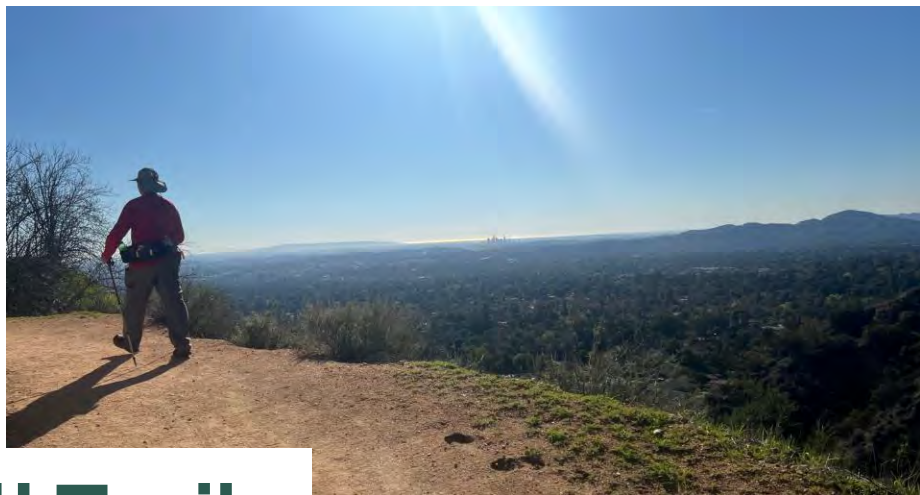
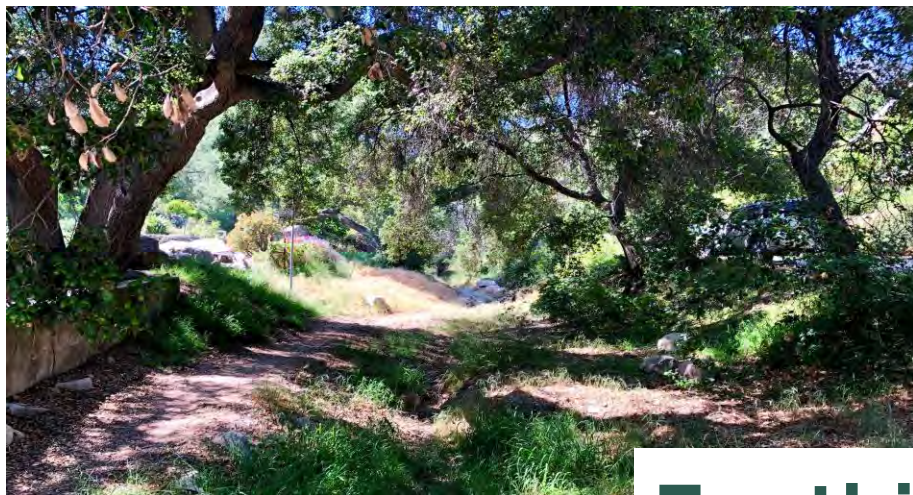




## Desert Trails



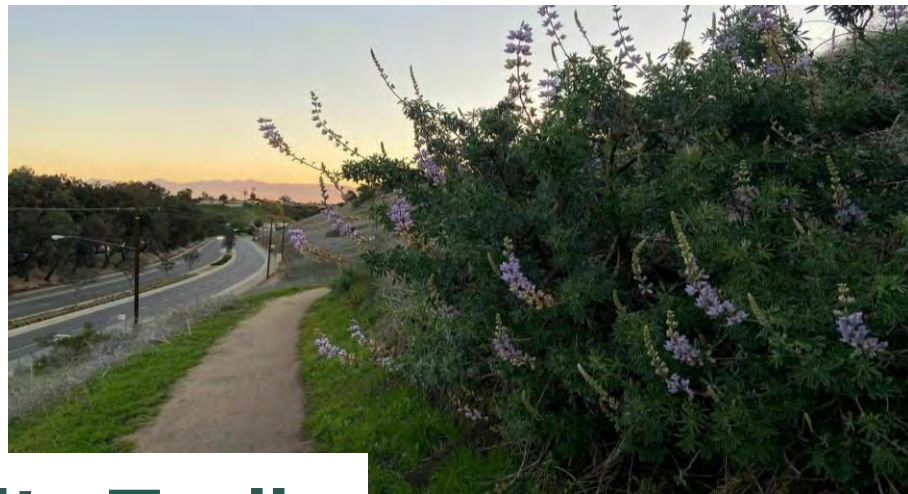




# Foothill Trails







# Community Trails





# Trails LA County App & Website

Powered by LA County Department of Parks and Recreation

EXPLORE PREPARE LEARN ENGAGE



## FIND A TRAIL

City, zip, trail name, etc.



OR BROWSE TRAILS  
PERFECT FOR:



Find alerts



Volunteer



About Us



Trail descriptions & photos



Alerts & trail use info



Trail lengths, elevations & difficulties



Safety & trail tips



GPS location tracking / app offline functionality

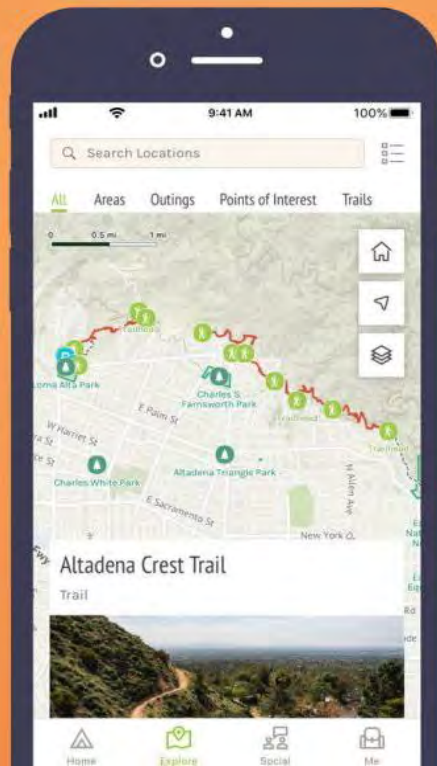


Maps for 600+ miles of official public trails!!!



View wildlife-flora & fauna that can be encountered on trails

TAKE A HIKE.  
OR A RIDE.  
OR A STROLL.  
OR A SEAT.



# Countywide Trail Managers Task Force



**US Forest Service**



**National Park Service**



**California State Parks**



**Mountains Recreation & Conservation Authority**



**Baldwin Hills Conservancy**



**Santa Monica Mountains Conservancy**



**San Gabriel Rivers & Mountains Conservancy**

Quarterly coordination among federal, state, & local trail managing agencies to create a network of support and shared resources:

- National Park Service
- US Forest Service
- California State Parks
- 12 Conservancies
- 33 Cities



# TRAILS MAINTENANCE CREW

- 8 Person Trails Maintenance Crew dedicated to maintain and operate over 233 miles of trails
- Emergency response to routine maintenance
- One of the hardest working teams in DPR!!!

