



**Legislative
Affairs &
Intergovernmental
Relations**

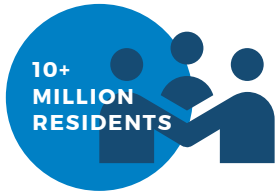


Los Angeles County

Federal Legislative Priorities

2023

About Los Angeles County



POPULATION

Los Angeles County has the largest population of any county in the nation—with nearly 10 million residents, who account for approximately 27 percent of California’s population.



UNINCORPORATED AREAS

More than one million residents live in approximately 120-125 unincorporated areas, whose municipal services are provided by the county.



CITIES

The other nearly 9.3 million residents live in 88 cities within the county, located throughout 4,084 square miles (larger than the combined states of Delaware and Rhode Island).



DIVERSITY

A diverse county, with more than 140 cultures and as many as 224 languages.



INDUSTRIES

Home to the largest port complex in the nation, a thriving aerospace research and development sector, the entertainment capital of the U.S., and the nation’s largest manufacturing center.

Federal Priorities

The Los Angeles County Board of Supervisors oversee a comprehensive government structure that provides vital public services, including health and human services, public safety, fire protection, and essential infrastructure services to 88 cities and approximately 120-125 unincorporated communities.

The County is proactively engaged in enhancing the physical, social, and economic well-being of its residents through fundamental safety-net services, as well as proactive local programs, including those geared towards combating homelessness, reforming the adult and youth justice systems, protecting the environment, and addressing equity issues. Federal investments in the County's critical services and initiatives help to maximize efficiencies and cost savings in programs that aid the most vulnerable populations. Investing in the County's residents and physical infrastructure will also result in greater social and economic gains throughout the nation.

In order to continue improving the lives of its residents and the economic vitality of the region, Los Angeles County needs on-going policy and funding support from Congress, and the Federal government.

Los Angeles County's federal advocacy efforts in 2023 will be primarily concentrated on:

AFFORDABLE HOUSING AND HOMELESS SERVICES

HEALTH, PUBLIC HEALTH AND BEHAVIORAL HEALTH CARE

DIGITAL DIVIDE

JUSTICE REFORM

CHILD WELFARE

HUMAN SERVICES ENTITLEMENT PROGRAMS

INFRASTRUCTURE INVESTMENTS

ENVIRONMENT AND SUSTAINABILITY

SUPPORT FOR IMMIGRANT RESIDENTS AND THEIR FAMILIES

Affordable Housing and Homeless Services

Los Angeles County supports proposals to increase funding for vital federal housing programs that prevent housing instability and homelessness, provide administrative flexibility to effectively administer assistance to residents, and advance innovative solutions to increase the region's stock of affordable housing.

Housing costs continue to outpace what many residents can afford, deepening housing instability among cost-burdened households and challenging regional efforts to address and reduce homelessness. The County places a high priority on providing affordable housing for renters, homeowners and those with high barriers to securing permanent housing. In the last five years, the County has invested \$878 million in affordable housing development which has funded, and will fund, the construction of approximately 10,133 affordable units, and has been used to leverage \$4.59 billion in public and private funds. The Los Angeles County Development Authority has also helped nearly 25,000 low-income households retain housing through the Section 8 Housing Choice Voucher (HCV) Program. In addition, the County has expanded its portfolio of available vouchers to include 964 new Emergency Housing Vouchers dedicated to serving homeless families.

To further advance these efforts, the County is supportive of:

- Increased funding to provide housing subsidies to eligible low-income families through its Section 8 HCV and Public Housing programs;
- Waivers of statutory and regulatory restrictions in housing programs;
- Full funding for the County's public housing resources including the Capital and Operating Funds; and
- Increased funding for the Community Development Block Grant (CDBG) and HOME Investment Partnerships Programs

The County has also partnered with the Los Angeles Homeless Services Authority and other local stakeholders to implement a comprehensive plan to reduce homelessness in the region. However, despite the County's ongoing local funding through Measure H and one-time federal and State investments, more people continue to fall into homelessness and financial resources remain insufficient to address the scale of need. An estimated 69,000 people in the County experience homelessness on a given night, a 4.1 percent increase since 2020. Of that total, more than 48,000 people are unsheltered.

In January 2023, the Board of Supervisors proclaimed a Local Emergency on Homelessness to accelerate and expand the County's response to the crisis. In support of the County's local emergency declaration and to advance a long-term, comprehensive response to homelessness, the County will continue to advocate for proposals that increase federal housing resources, including Homeless Assistance Grants, and provide additional flexibility to address local need, as well as additional resources for mental health and other supportive services for and accessible to people experiencing homelessness, including veterans. Los Angeles County veterans experiencing homelessness often need additional, in-home medical or specialty mental health care in order to stay housed.



The County urges Congress and the Administration to advance proposals that:

- Increase funding for federal housing programs, including the Section 8 HCV Program and HOME Investment Partnership Programs, to meet the scale of affordable housing needs in the County;
- Increase the allowed percentage cap on Project-Based Vouchers to 50 percent of the total HCV voucher allocation; and
- Reduce barriers to bond-financed affordable housing production and preservation by lowering the federally-set threshold of Private Activity Bond financing from 50 to 25 percent.

R.J. LYERLY

Chief Legislative Representative

RJLyerly@ceo.lacounty.gov

W: (202) 393-2404

C: (202) 498-5011

Behavioral Health Care

Los Angeles County supports efforts that increase access to critical services for those living with severe and persistent mental illness and substance use disorders, as well as those whose behavioral health has been adversely impacted by a multitude of societal stressors.

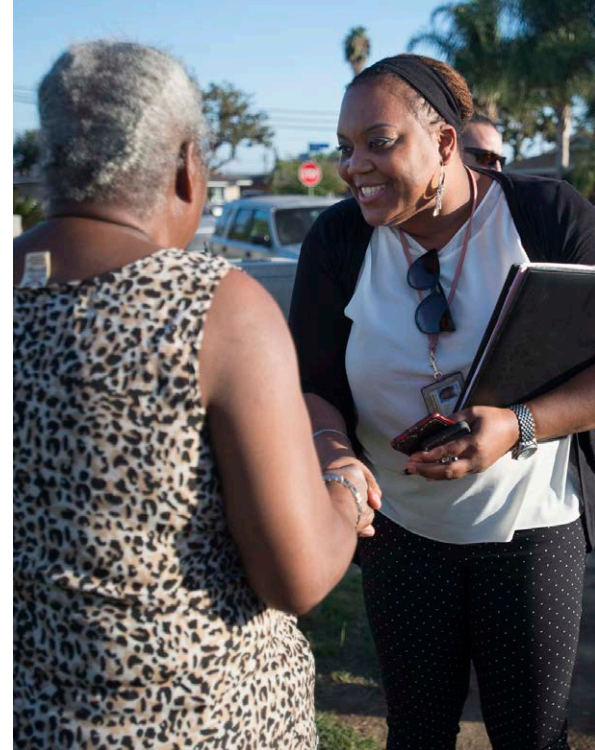
In Los Angeles County, the growing need for mental health and substance use disorder treatment and services continues to outpace available resources at all levels of care, including inpatient, residential and outpatient programs. The local behavioral health system continues to see increasing demands for mental health and substance use disorder services due to the pandemic, economic hardships, racial inequity, and homelessness. Furthermore, an effective and widely available mental health crisis system and alternative crisis response system that decrease reliance on law enforcement are critical to providing communities, particularly underserved communities, with access to reliable and timely crisis care.

The Los Angeles County's Department of Mental Health (DMH) and Department of Public Health (DPH) operate the nation's largest municipal mental health department and substance use disorder systems, respectively, in the nation, treating more than 300,000 County residents every year. Combined, DMH and DPH provide services in numerous community venues including schools, parks, libraries, community wellness centers and streets in addition to its hundreds of clinics, treatment sites and residential facilities, as well as dozens of inpatient hospitals. Additionally, DMH contracts with hundreds of community-based organizations and a massive countywide network of individual practitioners.

The County continues to advocate for ongoing funding to cover the operational costs required to operate expanded behavioral health and community care infrastructure for its most vulnerable residents, which are disproportionately Black, Indigenous, and people of color. The County looks forward to implementing California's newly approved Section 1115 waiver to provide targeted Medicaid services to eligible detainees in jail and juvenile detention 90 days prior to their release, and continues to support further policies to maintain Federal Medicaid Assistance Percentage for services for incarcerated populations during the pre-trial period.

The County supports efforts at the State level to advance a Section 1115 waiver proposal to improve services for individuals with Serious Mental Illness (SMI)/ Severe Emotional Disturbance (SED) which would, among other things, ease the Institutions for Mental Disease (IMD) Exclusion and fund short term treatment beds when clinically appropriate.

Lastly, the County strongly supports H.R. 1201 (Napolitano) to remove the IMD exclusion for states that have submitted a plan to: increase access to outpatient and community-based behavioral health care; increase availability of crisis stabilization services; and improve data sharing and coordination between physical health, mental health, and addiction treatment providers and first-responders. H.R. 1201 removes the IMD exclusion in a responsible way, ensuring states can develop needed IMD care while also holding them accountable for developing a robust community-based outpatient care continuum in tandem.



The County urges Congress and the Administration to advance proposals that:

- Repeal or ease the Medicaid Institutions for Mental Disease (IMD) Exclusion to permit Medicaid funding for treatment and thereby increase the beds available for individuals with serious behavioral health conditions including support for H.R. 1201 (Napolitano), or similar legislation;
- Use Section 1115 waiver authority to give states and counties the maximum flexibility needed to care for individuals with serious behavioral health conditions; and
- Support funding for programs that grow the behavioral workforce, especially for underserved communities.

R.J. LYERLY

Chief Legislative Representative

RJLyerly@ceo.lacounty.gov

W: (202) 393-2404

C: (202) 498-5011

Health & Public Health

Los Angeles County urges the federal government to continue supporting efforts that expand and enhance the local health care safety net, strengthen and expand local public health infrastructure and capacity, advance health equity, and improve the population's health in the County.

Los Angeles County's Department of Health Services (DHS) and Department of Public Health (DPH) are on the front lines of addressing the County's health challenges, delivering critical health care, public health, and behavioral health services that help prevent and treat physical and behavioral health conditions, particularly for the County's most disadvantaged communities.

As the County's health systems continue to respond and adapt to the evolving COVID-19 pandemic and other health crises, federal funding remains essential for protecting the safety net and the health and well-being of the most vulnerable residents. In particular, the \$8 billion (\$32 billion over four years) in statutory reductions to Medicaid disproportionate share hospital (DSH) payments, scheduled to go into effect in October 2023, must be repealed or delayed. Additionally, it is critical to secure additional flexible resources for the current and future public health emergency preparedness and response efforts; enhanced funding for safety net hospitals; increased, sustained, and flexible funding for public health and hospital infrastructure; expansion or permanent enhancements to Medicaid and other public healthcare access programs that expand healthcare coverage; increased funding and effective policies that elevate community health promotion and infectious disease prevention and control, including, but not limited to, sexually transmitted infections (STIs) and the substance use and overdose epidemics; and resources to recruit and retain workforce for the County's health care systems.

The County looks forward to implementing California's newly approved Section 1115 waiver to provide targeted Medicaid services to eligible detainees in jail and juvenile detention 90 days prior to their release and supporting further policies to maintain Federal Medicaid Assistance Percentage for services for incarcerated populations during the pre-trial period.



The County urges Congress and the Administration to advance proposals that:

- Preserve and strengthen the Medicaid program, including preserving support for safety net providers, especially by repealing or delaying the scheduled Medicaid DSH cuts;
- Ensure continued access to free COVID-19 vaccines, testing, and therapeutics for uninsured and under-insured individuals;
- Extend Medicaid benefits to incarcerated populations and advance legislation beyond California's Section 1115 waiver proposal that would lift the Medicaid inmate exclusion for services provided to County pre-trial jail inmates; and
- Strengthen the local public health infrastructure and workforce, and increase funding for infectious disease prevention and control, public health emergency preparedness, health promotion efforts, substance use disorder prevention and treatment, environmental health, and health equity for traditionally underserved and vulnerable communities.

R.J. LYERLY

Chief Legislative Representative

RJLyerly@ceo.lacounty.gov

W: (202) 393-2404

C: (202) 498-5011

Digital Divide

The County urges federal partners to advance proposals that provide funding for the development and expansion of broadband infrastructure and reliable, affordable networks to bridge the digital divide by increasing access to high-speed internet for as many households as possible, particularly in underserved communities.

The Los Angeles Region is struggling with the Digital Divide which has been exacerbated during COVID-19 as workplaces and schools have shut down and forced people to work from home. Families that do not have broadband access and/or computers at home are at a severe disadvantage. This impacts their abilities to use supportive County digital services which can possibly lead to other social-economic issues like homelessness.

Access to high-speed broadband internet and related resources is an essential means to accessing health services, education, economic resources, County services and job opportunities. In Los Angeles County, areas where more than 20 percent of households lack broadband service, are largely the same areas where the average household incomes are less than \$50,000 annually, and where people of color are more likely to be the majority of residents.

Los Angeles County, the State of California, the federal government, private partners and other institutions are constructing a Digital Divide Strategic Planning Approach. The plan will enable sustainable solutions that will bridge the digital divide gap to provide all households in the County with internet. This regional plan includes three strategic objectives. The first step is to provide digital devices, including by scaling sustainable device supply chain process, enabling reduced cost device options, and enabling after-purchase technology support options. Second, it is the County's goal to Increase accessibility by accelerating broadband access solutions deployed in the underserved areas, reducing internet subscription costs, and increasing public-private partnerships related to broadband access services. The final objective is enhancing digital literacy, including by enabling new channels to deliver digital literacy programs, and introducing new training programs to cover diverse needs.

Accordingly, the County will continue to support federal legislation and regulations that support the development and expansion of broadband infrastructure and reliable, affordable networks to bridge the digital divide by increasing access to high-speed internet for as many households as possible, particularly in underserved communities.



The County urges Congress and the Administration to advance proposals that:

- Incentivize private investment in broadband infrastructure in historically underserved and rural communities;
- Create workforce development pipeline programs in the broadband, fiber and related telecommunications infrastructure industries; and
- Utilize innovative, short-term and long-term strategies to provide free or low-cost high-speed internet and devices to disadvantaged communities.

R.J. LYERLY

Chief Legislative Representative

RJLyerly@ceo.lacounty.gov

W: (202) 393-2404

C: (202) 498-5011

Justice Reform

The County urges Congress and the Administration to support efforts that advance national reforms to the criminal legal system, as well as local efforts such as the County's work to provide alternatives to incarceration and to transform the juvenile justice system.

The County is committed to supporting meaningful reforms to Federal, State, and local justice systems. The Los Angeles County Board of Supervisors continues to support and make investments to transform the various facets of the criminal, legal and justice system lifecycle by: enhancing law enforcement oversight and accountability; reforming arrest and pretrial detention practices; expanding alternatives to incarceration; improving the systems of care in and outside of jail settings; and providing support to the formerly incarcerated so they can transition back into society. Such major reforms necessitate a robust multi-disciplinary effort, including a continued and expanded partnership with the Federal government.

The County supports federal legislative and funding proposals that advance national, statewide, and local efforts to transform the adult and youth criminal legal systems, including proposals that would support the County's goals to:

- Divert adults and youths from incarceration and into rehabilitative, health-focused, and care-first systems;
- Mitigate disparities in the juvenile and criminal legal systems based on racial, economic, or immigration status;
- Strengthen law enforcement transparency, accountability, and policing reforms;
- Increase funding and flexibility to use federal health benefits for the incarcerated population, including the mentally ill;
- Fund and implement pretrial reforms and associated best practices to reduce detention while maintaining public safety; and
- Support increased funding and eligibility for resources and support, to the areas including, but not limited to, housing, mental health, substance use disorders, youth development, and employment, education, and training for youth and adults impacted by the criminal legal system



The County urges Congress and the Administration to advance proposals that:

- Strengthen law enforcement transparency, accountability, and policing reforms; and
- Expand Medicaid to more persons, including pre-trial individuals in state and local detention facilities (including by lifting the Medicaid Inmate Exclusion policy), and also individuals currently ineligible for Medicaid services due to placement in a facility categorized as an Institution for Mental Disease (IMD).

R.J. LYERLY

Chief Legislative Representative

RJLyerly@ceo.lacounty.gov

W: (202) 393-2404

C: (202) 498-5011

Child Welfare

Los Angeles County supports investments to improve placement stability, strengthen families, enable vulnerable youth to transition to self-sufficiently and adulthood, and increase permanency for children currently in foster care.

The Los Angeles County Department of Children and Family Services (DCFS) is one of the largest county governed child protective services agencies in the United States. On any given day, DCFS provides family-centered and child-focused services to more than 25,000 children and their families.

DCFS serves more than 2600 young adults ages 18-20 years-old through its extended foster care program. More than half of the children in foster care, countywide, are placed with relatives. This outcome is unmatched by any other large child welfare system in the nation.

DCFS used the IV-E Waiver Demonstration Project to improve the services and support provided to children and families, which resulted in positive outcomes including an 18.7 percent reduction in the number of children in care and a 33 percent reduction in residential care use. Of note, approximately 2 percent of foster children are placed in congregate care.

To promote the safety and well-being of children, the County is investing in resources that prevent entry into the child welfare system. The County has demonstrated that prevention services have a significant impact on keeping families out of foster care and/or from coming into the child welfare system. For example, Family Preservation (FP) services has shown that families who receive these services have a much lower recidivism rate than those who do not.

DCFS has an annual operating budget of over \$2.8 billion used to provide strong and tailored services to children involved in the child welfare system. The objective is to provide the tools needed so a child can thrive and be given the opportunity to reach their highest potential. The County has also prioritized investments to improve placement stability, strengthen families, enable vulnerable youth to transition to self-sufficiently and adulthood, and increase permanency for children in foster care.

Congress has enacted numerous legislative reforms intended to improve the care and services provided to foster children, and support at-risk families. However, further federal action is needed to provide counties sufficient resources and flexibility to advance reforms that will result in positive outcomes for children and families.



The County urges Congress and the Administration to advance proposals that:

- Support counties to successfully implement the Family First Prevention Services Act, including exempting Qualified Residential Treatment Programs from the Institutions for Mental Disease exclusion;
- Reauthorize programs under Title IV-B of the Social Security Act, that would expand and increase Federal IV-B funding for primary prevention efforts and build capacity to serve vulnerable youth and families;
- Ensure that all children and youth in foster care have the documentation they need to travel, work and ultimately make a successful transition to adulthood; and
- Provide reforms to expand client eligibility for federal funding, such as the elimination of the AFDC income eligibility threshold for foster care and modification of Extended Foster Care eligibility and redetermination requirements.

R.J. LYERLY

Chief Legislative Representative

RJLyerly@ceo.lacounty.gov

W: (202) 393-2404

C: (202) 498-5011

Human Services Entitlement Programs

Los Angeles County supports preserving and increasing federal funding for human services entitlement programs, which help alleviate financial hardship and food insecurity for the most vulnerable residents, while promoting health and self-sufficiency to transform lives through economic stability, equity, and inclusion.

The Department of Public Social Services (DPSS) is the second largest department in Los Angeles County and the largest social services agency in the United States. DPSS provides services to one out of every three residents in the County in 19 different languages at more than 40 offices throughout the County.

Recent global and national crises and their economic effects have made it more difficult for many low-income households, many of which are disproportionately Indigenous communities and communities of color, to afford food and other basic needs. Since March 2020, states and local governments have been using the temporary Supplemental Nutrition Assistance Program (SNAP), Emergency Allotment (EA) and administrative and programmatic flexibilities pursuant to Federal law, to provide extended and expanded benefits.

However, these provisions were temporary, and some have expired. Given continued economic pressures, it is important that the Federal government continue to extend these vital administrative flexibilities and program enhancements which allow states and local governments to continue providing SNAP benefits in the most effective and equitable manner.

The County will continue to support and advocate for proposals that extend and preserve administrative flexibilities, program access/simplification, and program enhancements for SNAP and other human services programs. The County also supports the alignment of eligibility requirements between the Temporary Assistance for Needy Families (TANF) and SNAP.



The County urges Congress and the Administration to advance proposals that:

- Make it easier for college students to be eligible for SNAP benefits, eliminate burdensome reporting and recertification requirements for SNAP and other assistance programs, and waive initial certification and recertification interviews for SNAP; and
- Help states and counties to address the surge in fraudulent skimming and theft of **Temporary Assistance for Needy Families (TANF)** and SNAP benefits on electronic benefits transfer (EBT) cards.

The County also urges Congress and the Administration to advance proposals that:

- Reauthorize and increase funding for the TANF block grant;
- Make permanent the increases and changes the American Rescue Plan of 2021 made to the Child Tax Credit and Earned Income Tax Credit; and
- Exclude cash payments from publicly funded guaranteed income programs from the income calculations of all public assistance programs.

R.J. LYERLY

Chief Legislative Representative

RJLyerly@ceo.lacounty.gov

W: (202) 393-2404

C: (202) 498-5011

Infrastructure Investments

The County urges federal partners to support efforts that continue infrastructure investments and projects that support cities, counties, and the State in improving and maintaining vital public infrastructure in the greater Los Angeles region.

The Los Angeles County region – the nation's largest manufacturing and international trade center, and the hub for aerospace research and development – serves as an economic engine for the entire nation. Additionally, the region will host the 2028 Summer Olympic Games, providing a catalyst for the need to further invest in sustainable and resilient public infrastructure.

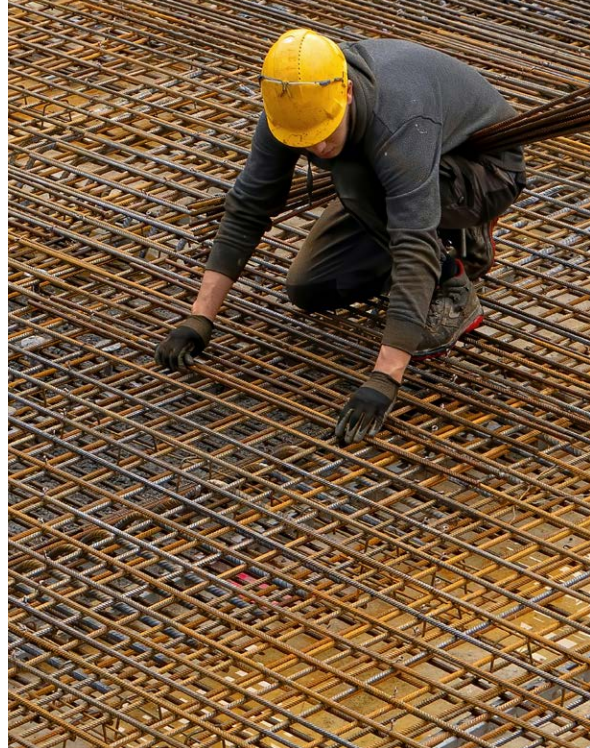
The County is utilizing existing local and State voter-approved revenue measures to invest in local streets, roads, and bridges, which are vital to the region's economy, public safety, and residents' quality of life. However, additional investment and legislative actions from federal partners would greatly assist the County to meet its larger regional infrastructure goals. The County supports continued infrastructure investments, including new funding that was made available by the Infrastructure Investment and Jobs Act (Public Law 117-58) and the Inflation Reduction Act (Public Law 117-169). In addition, the County remains supportive of increased federal support to improve the physical infrastructure in the greater Los Angeles region, including highways, bridges, dams, flood protection, water delivery and conservation systems, stormwater quality management, solid waste management facilities, airports, energy, electric-vehicle infrastructure, and public transit networks.

The County is committed to making its communities more climate resilient, modernizing its infrastructure systems, helping local businesses to partner with community-based organizations to advance environmental justice and economic opportunity for disadvantaged communities, and accelerating racial and gender equity in the workforce.

The County urges Congress and the Administration to advance proposals that will help ensure residents have access to safe, clean, and reliable water resources; access to state-of-the-art transportation infrastructure that is safe, resilient, sustainable, and equitable; and are able to thrive in a safe, clean, and sustainable environment.

Specifically, the County is seeking support for:

- Water conservation, environmental protection, and resiliency projects;
- Transportation mobility and safety projects in order to fully implement its Vision Zero Action Plan; and
- Waste reduction and recycling projects needed to meet state mandated goals.



The County urges Congress and the Administration to advance proposals that:

- Improve the region's physical infrastructure, including highways, bridges, dams, flood protection, water delivery and conservation systems, stormwater quality management, solid waste management facilities, airports, energy, electric-vehicle infrastructure, and public transit networks; and
- Help local businesses to partner with community-based organizations in accelerating racial and gender equity in the workforce.

R.J. LYERLY

Chief Legislative Representative

RJLyerly@ceo.lacounty.gov

W: (202) 393-2404

C: (202) 498-5011

Environment and Sustainability

The County urges federal partners to support efforts that promote clean energy infrastructure, advance environmental justice, and invest in climate resiliency.

Environmental hazards compounded by the impacts of climate change continue to affect vital infrastructure and the daily lives of the residents of the County. The County supports policies and investments that transform the energy, water, food, and transportation systems; help overcome past inequities that have resulted in disproportionate pollution burdens and health outcomes for communities of color; help local businesses, organizations, and residents in disadvantaged communities adapt to climate change; and advance racial and gender equity.

To address these environmental issues and create a more sustainable region, the County will support proposals that promote clean energy infrastructure, advance environmental justice, and invest in climate resiliency. This includes new funding from the Infrastructure Investment and Jobs Act (Public Law 117-58) and the Inflation Reduction Act (Public Law 117-169).

The County will support federal proposals that would:

- Further decrease greenhouse gas emissions;
- Develop infrastructure (e.g., organic waste processing capacity) and community-scale programs (e.g., resilience hubs, extreme heat risk communication strategies), as well as provide funding to address imminent health risks;
- Increase local water supply and improve water quality, as well as support sustainable water infrastructure overall;
- Enhance the electric grid infrastructure and expand community-based solar and storage projects;
- Support efforts to properly abandon orphaned oil wells and conduct site remediation when no responsible party can be identified;
- Strengthen regional food supply chains by increasing climate mitigation and resilience in agriculture, as well as improve urban access to fresh local foods; and
- Promote climate resiliency and provide sufficient funding to encourage and incentivize production methods and technologies that advance clean manufacturing, create greenhouse gas reducing jobs, and eliminate motor vehicle emissions.



The County urges Congress and the Administration to advance proposals that:

- Further decrease greenhouse gas emissions, develop infrastructure (e.g., organic waste processing capacity) and community-scale programs (e.g., resilience hubs, extreme heat risk communication strategies), as well as funding to address imminent health risks;
- Enhance the local water and electric grid infrastructures; and
- Provide sufficient funding to incentivize production technologies that advance climate resiliency.

R.J. LYERLY

Chief Legislative Representative

RJLyerly@ceo.lacounty.gov

W: (202) 393-2404

C: (202) 498-5011

Support for Immigrant Residents and their Families

Los Angeles County supports efforts to ensure that all individuals, regardless of immigration status, are treated humanely and given a fair opportunity to secure lawful immigration status.

With more than a third of its 10 million residents having been born outside the United States, Los Angeles County is the most populous and diverse county in the United States. Immigrants are deeply integrated into nearly all aspects of County life.

To advance the well-being of immigrants and their families, the County is taking action to ensure that immigrants, from unaccompanied children and refugees to longtime County residents who may be subjected to removal proceedings, have the support and services they need to remain and thrive in the Los Angeles region. The Board has taken action to advance policies that ensure all residents, regardless of immigration status, are treated humanely, afforded due process protections, provided access to counsel and necessary services without fear of immigration consequences, and given the opportunity to secure permanent immigration status.

The County will continue to support Federal proposals that would provide:

- Immigration reforms that offer lawful immigration status, and increased visa opportunities, including for Deferred Action for Childhood Arrivals (DACA), Temporary Protected Status (TPS) beneficiaries and others, such as humanitarian-based visa recipients;
- Access to basic public services and benefits, including pandemic relief regardless of immigration status;
- An end to civil incarceration of noncitizens for immigration proceedings, and protection from inhumane detention conditions;
- Adequate funding for legal representation for indigent immigrants in immigration court proceedings;
- Support for reunification of families separated at the U.S. - Mexico border, and support for unaccompanied children and their families;
- Lawful permanent status for Afghan and Ukrainian humanitarian arrivals;
- Federal resources to address the backlog of U.S. Citizenship and Immigration Services (USCIS) cases in the region; and
- Resources for local jurisdictions to support new migrant arrivals.



The County urges Congress and the Administration to advance proposals that:

- Ensure local jurisdictions have resources to support new migrant arrivals;
- Provide lawful permanent status for Afghan, Ukrainian, and other humanitarian arrivals; and
- Provide adequate funding for legal representation for indigent immigrants in immigration court proceedings

R.J. LYERLY

Chief Legislative Representative

RJLyerly@ceo.lacounty.gov

W: (202) 393-2404

C: (202) 498-5011

Board of Supervisors Priorities



CHILD PROTECTION

Enhanced well-being and success for systems-involved youth
dcfs.lacounty.gov



IMMIGRATION

Immigrant protection and advancement
oia.lacounty.gov



HOMELESSNESS

Coordination of community-based services and housing resources
homeless.lacounty.gov



POVERTY ALLEVIATION

Aiming to establish sustainable and long-term poverty alleviation
ceo.lacounty.gov/pai



ENVIRONMENTAL HEALTH OVERSIGHT & MONITORING

Monitoring for a cleaner and healthier environment
publichealth.lacounty.gov/eh



ANTI-RACISM, DIVERSITY AND EQUITY

An anti-racist Los Angeles County policy agenda
ceo.lacounty.gov/ardi



CARE FIRST, JAILS LAST

Alternatives to incarceration and reduced involvement with the justice system for vulnerable adult and youth populations
jcod.lacounty.gov
dyd.lacounty.gov
dhs.lacounty.gov/office-of-diversion-and-reentry



SUSTAINABILITY

Making our communities healthier, more livable, economically stronger, more equitable, more resilient, and more sustainable
cso.lacounty.gov



ALLIANCE FOR HEALTH INTEGRATION

Streamlined access to integrated health care
ceo.lacounty.gov/alliance-for-health-integration

Los Angeles County Board of Supervisors

Janice Hahn, Chair
Fourth District

Hilda L. Solis
First District

Holly J. Mitchell
Second District

Lindsey P. Horvath
Third District

Kathryn Barger
Fifth District

Fesia A. Davenport
Chief Executive Officer

Samara Ashley
Assistant Chief Executive Officer

R. J. Lyerly
Chief Legislative Representative



**Legislative
Affairs &
Intergovernmental
Relations**

LEGISLATIVE AFFAIRS AND INTERGOVERNMENTAL RELATIONS

660 North Capitol St. N.W. Suite 430

Washington D.C. 20001

(202) 393-2404

ceo.lacounty.gov/legislative-affairs-and-intergovernmental-relations/

bos.lacounty.gov

lacounty.gov