



**Legislative
Affairs &
Intergovernmental
Relations**

One Goal

To Enrich Lives Through
Effective & Caring Service

2024

LOS ANGELES COUNTY
Federal Legislative Priorities

About Los Angeles County

POPULATION



MILLION RESIDENTS

Los Angeles County has the largest population of any county in the nation—with nearly 10 million residents, who account for approximately 27 percent of California's population.

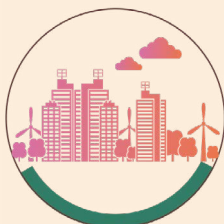
UNINCORPORATED AREAS



120-125 UNINCORPORATED AREAS

More than one million residents live in approximately 120-125 unincorporated areas, whose municipal services are provided by the County.

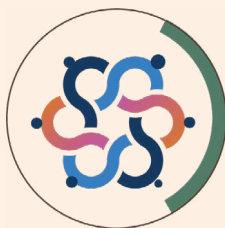
CITIES



88 CITIES

The other nearly 9.3 million residents live in 88 cities within the County, located throughout 4,084 square miles (larger than the combined states of Delaware and Rhode Island).

DIVERSITY



140 CULTURES

A diverse county, with more than 140 cultures and as many as 224 languages.

INDUSTRIES



LARGEST PORT COMPLEX

Home to the largest port complex in the nation, a thriving aerospace research and development sector, the entertainment capital of the U.S., and the nation's largest manufacturing center.



L.A. County's Federal Priorities

The Los Angeles County Board of Supervisors oversee a comprehensive government structure that provides vital public services, including health and human services, public safety, fire protection, and essential infrastructure services to 88 cities and approximately 120-125 unincorporated communities.

The County is proactively engaged in enhancing the physical, social, and economic well-being of its residents through fundamental safety-net services, as well as proactive local programs, including those geared towards combating homelessness, reforming the adult and youth justice systems, protecting the environment, and addressing equity issues. Federal investments in the County's critical services and initiatives help to maximize efficiencies and cost savings in programs that aid the most vulnerable populations. Investing in the County's residents and physical infrastructure will also result in greater social and economic gains throughout the nation.

While the County has many priorities, they are part of one main goal, to enrich the lives of our almost 10 million residents through effective and caring service. In order to continue improving the lives of its residents and the economic vitality of the region, Los Angeles County needs on-going policy and funding support from Congress, and the Federal government.

Los Angeles County's federal advocacy efforts in 2024 will be primarily concentrated on:

AFFORDABLE HOUSING & HOMELESS SERVICES

CHILD WELFARE

DIGITAL DIVIDE

ENVIRONMENT & SUSTAINABILITY

HEALTH, PUBLIC HEALTH, & BEHAVIORAL HEALTH CARE

HUMAN SERVICES ENTITLEMENT PROGRAMS

PUBLIC INFRASTRUCTURE

JUSTICE REFORM & VICTIMS ASSISTANCE

SUPPORT FOR IMMIGRANT RESIDENTS & THEIR FAMILIES



Affordable Housing & Homeless Services

Los Angeles County supports proposals that fund homeless assistance programs and facilitate a coordinated and comprehensive response to the affordable housing crisis.

Faced with one of the most expensive housing markets in the nation, the County remains committed to closing the affordable housing gap and accelerate its response to the homelessness crisis.

Since 2018, the County has invested \$891.5 million in affordable housing development, which has funded, or will fund, the construction of approximately 10,039 units, and has been used to leverage \$4.94 billion in public and private funds. In addition, the Los Angeles County Development Authority has helped over 25,000 low-income households secure housing through the federal Housing Choice Voucher program.

The County has also partnered with public entities and regional stakeholders to implement a comprehensive plan to address homelessness. Since July 2017, approximately 90,000 formerly homeless County residents have been permanently housed since July 2017 and more than 137,000 have moved into interim housing through programs funded by Measure H, a quarter-cent sales tax approved by local voters in 2017, and other public funding sources.

Despite these efforts, the chronic shortage of affordable units keeps housing stability out of reach for many. According to the 2023 Greater Los Angeles Homeless Count, the number of homeless individuals in the County on any given night increased by nine percent to 75,518. This growth underscores the urgent need for policy solutions and resources comparable to the scale of this crisis.

In January 2023, the Board of Supervisors unanimously approved a Local State of Emergency on Homelessness to expand and expedite the County's rehousing efforts. Led by the County's Homeless Initiative, this emergency response is organized into four strategic missions of Encampment Resolution, Housing, Mental and Substance Use Disorder Services, and Eviction Protection.

To advance these local strategies, the County supports proposals that:

- Increase affordable housing production, preserve existing affordable units, and provide additional tenant protections.
- Increase funding and flexibility for federal rental subsidy programs that support low-income and homeless residents and provide full capital and operational funding for Public Housing resources.
- Expand funding for federal programs that support housing and community development in underserved communities.
- Provide flexible homeless assistance and reduce administrative barriers to using federal resources.
- Increase access to and the availability of housing resources and supportive services for Veterans experiencing homelessness.

The County urges Congress and the Administration to advance proposals that:

- Increase or waive the statutory cap on project-based Section 8 Housing Choice Vouchers to support new units in the supportive housing pipeline.
- Protect and provide sufficient funding for critical housing and community development programs, and local projects that offer housing services and promote the well-being of local communities.
- Provide flexibility for the Family Unification Program and the Continuum of Care program to apply federal resources more effectively towards stabilizing individuals and families at-risk or experiencing homelessness.
- Exempt service-connected disability payments from income calculations for veterans when determining supportive housing eligibility.

R.J. LYERLY

Chief Legislative Representative

RJLyerly@ceo.lacounty.gov
W: (202) 393-2404 | C: (202) 498-5011



Child Welfare

Los Angeles County supports proposals that: promote family permanence and well-being for all children; support a successful transition to adulthood for older youth in foster care; engage with communities in upfront prevention strategies to strengthen families and keep children and youth safely at home or with kin; and provide resources and support for foster families.

The Los Angeles County Department of Children and Family Services (DCFS) is one of the largest county-governed child protective services agencies in the nation and is responsible for ensuring the safety of more than two million children across 88 diverse cities in Los Angeles County.

DCFS prioritizes child safety while emphasizing strengths over deficits, addressing underlying needs over behaviors, and encouraging empowerment over helplessness. DCFS partners with community-based organizations to offer a range of services focused on well-being including parenting education courses, housing assistance, medical screenings, tutoring, childcare, and general family friendly activities. For children who are not able to return home safely, DCFS prioritizes relatives and kin as placement resources and invests significant resources to recruit, approve, prepare and support resource families of all diverse backgrounds who can provide healthy, stable, and living homes.

The County supports proposals that promote the safety and well-being of children by investing in resources, such as family preservation services, that are short-term and designed to assist families in crisis and keep children safely at home with their families.

Support from Federal partners can help to promote innovative policies and improve upon existing legislation to provide sufficient funding, workforce support, flexibility and resources that enable states and counties to successfully keep families safely together and, when that is not possible, provide for permanency for children in foster care and to ensure a successful transition to adulthood for all transitional aged youth.

The County urges Congress and the Administration to advance proposals that:

- Support counties to successfully implement the Family First Prevention Services Act, including exempting Qualified Residential Treatment Programs from the Institutions for Mental Disease Exclusion.
- Reauthorize programs under Title IV-B of the Social Security Act that would expand and increase Federal IV-B funding for primary prevention efforts and build capacity to serve vulnerable youth and families.
- Ensure that all children and youth in foster care have the documentation (e.g., social security cards) they need to travel, work, and ultimately make a successful transition to adulthood.
- Provide reforms to expand client eligibility for federal funding, such as the elimination of the Aid to Families with Dependent Children income eligibility threshold for foster care.

R.J. LYERLY
Chief Legislative Representative

RJLyerly@ceo.lacounty.gov
W: (202) 393-2404 | C: (202) 498-5011



Digital Divide

Los Angeles County supports proposals that provide funding for the development and expansion of broadband infrastructure and reliable, affordable networks to bridge the digital divide by increasing access to high-speed internet for as many households as possible, particularly in underserved communities.

In Los Angeles County, more than 20 percent of households lack broadband service. Largely in these same areas, the average household income is less than \$50,000 per year, and people of color are more likely to be the majority of residents.

Households that do not have equitable access to and use of reliable high-speed broadband or internet services, internet-enabled devices, training, and support are unable to fully participate in education and employment opportunities and are severely hampered in their overarching capacity to engage in our democracy and the 21st century economy.

Access to high-speed broadband, internet and related resources is essential to accessing health services, education, economic resources, County services, and job opportunities.

Regional, state, federal, and private partners are engaging in collaborative efforts to advance digital equity and inclusion through the Infrastructure Investment and Jobs Act. The historic amount of federal investment will support broadband infrastructure deployment and digital equity and inclusion programming. This includes the development and implementation of key information and communication technologies that are needed in a thriving digital equity ecosystem.

The County will support proposals that:

- Incentivize private investment in broadband infrastructure in historically underserved and rural communities.
- Use innovative, short-term, and long-term strategies to provide free or low-cost high-speed internet, and related devices to disadvantaged communities.
- Expand and modernize Wi-Fi at County facilities and other public facilities to help close the digital divide for residents in disadvantaged and broadband deficient communities.

Los Angeles County will continue to support legislation and regulations that advance digital equity, and that support the development and expansion of broadband infrastructure and reliable, affordable networks to bridge the digital divide to increase access to high-speed internet for as many households as possible, particularly in underserved communities.

The County urges Congress and the Administration to advance proposals that:

- Support multi-year funding to extend the Affordable Connectivity Program beyond its projected expiration in mid-2024.
- Create workforce development pipeline programs in the broadband, fiber, and related telecommunications infrastructure industries.
- Support Digital Equity Act (DEA) Programs with the National Telecommunications and Information Administration.

R.J. LYERLY
Chief Legislative Representative

RJLyerly@ceo.lacounty.gov
W: (202) 393-2404 | C: (202) 498-5011



Environment & Sustainability

Los Angeles County supports proposals that provide additional investments, expand funding categories, and streamline processes to use federal funding or work with federal entities to meet the changing needs of the Los Angeles region, implement enhanced mobility plans, and achieve green transition goals.

Los Angeles County manages public access to recreational lands and programs, maps climate vulnerability, implements strategies for a green transition, and addresses the localized impacts of climate change within communities and on public amenities.

The County supports proposals that:

- Promote climate resiliency and provide sufficient funding to encourage and incentivize production, methods, technologies, and jobs that advance clean manufacturing, and reduce greenhouse gases.
- Increase local water supply, ensure access to clean water, and improve water quality, as well as support sustainable water infrastructure and conservation.
- Restore, increase, and protect natural resource areas, such as mountains, forests, beaches, natural areas, preserves, wildlife/wildflower sanctuaries, greenways, waterways, riparian corridors, trails, degraded lands/brownfield sites, and other natural environments containing ecological, geological, habitat, cultural, recreational, native biodiversity, and scenic value.
- Fund or promote projects that mitigate the effects of climate change, promote regenerative urban agriculture, improve cooling strategies, reduce environmental pollutants, strengthen natural spaces within communities, and increase heat relief access in underserved areas.
- Incorporate plans, such as the “Our County” Sustainability Plan and County’s Park Needs Assessment Plus (PNA+) 30x30 Plan and, LA County Water Plan into programs, legislation, policies, and funding opportunities.

Support from federal partners can help ensure that the County can fully use federal funding and assistance to ensure an equitable transition to a green economy, mitigate climate change risks, and promote a more resilient region. Further, assistance will help maintain and develop public-access amenities across the region which improve quality of life and livability.

The County urges Congress and the Administration to advance proposals that:

- Incorporate local environmental plans and strategies into legislative and administrative actions that will positively benefit the region.
- Enhance technical assistance for municipalities to apply, access, and receive federal funding opportunities.
- Address the rehabilitation and reuse of degraded lands and regional brownfield sites.

R.J. LYERLY

Chief Legislative Representative

RJLyerly@ceo.lacounty.gov
W: (202) 393-2404 | C: (202) 498-5011



Health & Public Health

Los Angeles County urges the federal government to continue supporting efforts that expand and enhance the local health care safety net system, strengthen, and expand local public health infrastructure and capacity, advance health equity, and improve the population's health in the County.

Los Angeles County's Department of Health Services (DHS) and Department of Public Health (DPH) are on the front lines of addressing the County's health challenges. These departments deliver critical health care, public health, and behavioral health services that help prevent and treat physical and behavioral health conditions, particularly for the County's most disadvantaged communities.

As the County's health systems continue to respond and adapt to the ongoing impacts of COVID-19, other respiratory diseases such as flu and Respiratory Syncytial Virus Infection, and other health crises, federal funding remains essential for protecting the safety net and the health and well-being of the County's most vulnerable residents. In particular, the \$32 billion in statutory reductions to Medicaid disproportionate share hospital (DSH) payments over the next four years must be repealed or delayed. Absent legislative action, the County stands to lose approximately half of its DSH allotment annually, amounting to a loss of \$662 million per year.

Additionally, it is critical to secure additional flexible resources for ongoing and future public health emergency preparedness and response efforts; enhanced funding for safety net hospitals; increased, sustained, and flexible funding for public health and hospital infrastructure and data modernization; expansion or permanent enhancements to Medicaid and other public healthcare access programs that expand healthcare coverage; increased funding and effective policies that elevate community health promotion and infectious disease prevention and control, including, but not limited to, sexually transmitted infections (STIs) and the substance use and overdose epidemics; and resources to recruit and retain workforce for the County's health care systems.

Building on the progress made with California's Section 1115 waiver, Los Angeles County is committed to further enhancing healthcare outcomes for justice-involved individuals. This includes supporting policies that maintain the Federal Medicaid Assistance Percentage for services for incarcerated populations during the pre-trial period, as well as advocating for policies that ease the Medicaid inmate exclusion.

The County urges Congress and the Administration to advance proposals that:

- Preserve and strengthen the Medicaid program, including preserving support for safety net providers, especially by repealing or delaying the scheduled Medicaid DSH cuts.
- Improve healthcare outcomes for justice-involved individuals and advocate for easing the Medicaid inmate exclusion to ensure continuous access to healthcare services for this population.
- Strengthen the local public health infrastructure and workforce, and increase funding for infectious disease prevention and control, public health emergency preparedness, health promotion efforts, substance use disorder prevention and treatment, environmental health, and health equity for traditionally underserved and vulnerable communities.
- Ensure continued access to free COVID-19 vaccines, testing, and therapeutics for uninsured and under-insured individuals.

R.J. LYERLY

Chief Legislative Representative

RJLyerly@ceo.lacounty.gov

W: (202) 393-2404 | C: (202) 498-5011



Behavioral Health Care

Los Angeles County supports efforts that increase access to critical services for those living with severe and persistent mental illness and substance use disorders, as well as those whose behavioral health has been adversely impacted by a multitude of societal stressors.

In Los Angeles County, the growing need for mental health and substance use disorder treatment and services continues to outpace available resources at all levels of care, including inpatient, residential and outpatient programs. The local behavioral health system continues to see increasing demands for mental health and substance use disorder services due to the ongoing impacts of the COVID-19 pandemic, economic hardships, racial inequity, and homelessness. Furthermore, an effective and widely available mental health crisis system and alternative crisis response system that decrease reliance on law enforcement are critical to providing communities, particularly underserved communities, with access to reliable and timely crisis care.

The Los Angeles County's Department of Mental Health (DMH) and Department of Public Health (DPH) operate the nation's largest municipal mental health department and substance use disorder systems, respectively, in the nation, treating more than 300,000 County residents every year. Combined, DMH and DPH provide services in numerous community venues including schools, parks, libraries, community wellness centers and streets in addition to its hundreds of clinics, treatment sites and residential facilities, as well as dozens of inpatient hospitals. Additionally, DMH contracts with hundreds of community-based organizations and a massive countywide network of individual practitioners. Meanwhile, DPH operates the County's network for substance use disorder treatment and prevention services and contracts with several hundred community-based providers to provide these and harm reduction services countywide.

The County continues to advocate for ongoing funding to cover the operational costs required to operate expanded behavioral health and community care infrastructure for its most vulnerable residents, which are disproportionately Black, Indigenous, and people of color. The County is working towards implementing California's Section 1115 waiver to provide targeted Medicaid services to eligible detainees in jail and juvenile detention 90 days prior to their release, and continues to support further policies to maintain Federal Medicaid Assistance Percentage for services for incarcerated populations during the pre-trial period. The County also supports efforts by the State to advance a Section 1115 waiver proposal to improve services for individuals with Serious Mental Illness (SMI)/ Severe Emotional Disturbance (SED) which would, among other things, ease the Institutions for Mental Disease (IMD) Exclusion and fund short term treatment beds when clinically appropriate.

Lastly, the County supports H.R. 1201 (Napolitano) to remove the IMD exclusion for states that have submitted a plan to: increase access to outpatient and community-based behavioral health care; increase availability of crisis stabilization services; and improve data sharing and coordination between physical health, mental health, and addiction treatment providers and first- responders. H.R. 1201 removes the IMD exclusion in a responsible way, ensuring states can develop needed IMD care while also holding them accountable for developing a robust community-based outpatient care continuum in tandem.

The County urges Congress and the Administration to advance proposals that:

- Repeal or ease the Medicaid Institutions for Mental Disease (IMD) Exclusion, to permit Medicaid funding for treatment and thereby increase the beds available for individuals with serious behavioral health conditions.
- Use Section 1115 waiver authority to give states and counties the maximum flexibility needed to care for individuals with serious behavioral health conditions.
- Support funding for programs that grow the behavioral workforce, especially for underserved communities.
- Support funding to expand access to harm reduction and low barrier substance use disorder treatment services.
- Support proposals to ensure that individuals in crisis who call 9-8-8 be routed to the call center geographically closest to them, while also protecting their privacy by concealing their exact location.

R.J. LYERLY

Chief Legislative Representative

RJLyerly@ceo.lacounty.gov
W: (202) 393-2404 | C: (202) 498-5011



Human Services Entitlement Programs

Los Angeles County supports preserving and increasing federal funding for human services entitlement programs. These social safety net programs address financial hardship and food insecurity for our most vulnerable individuals, while promoting health, economic stability and self-sufficiency to transform lives through work opportunities, equity, and inclusion.

The Department of Public Social Services (DPSS) is the largest social services agency in the nation. DPSS provides services to one out of every three residents in the County, in 19 different languages at more than 40 offices throughout the County. Approximately 996,000 households (1.6 million people, including 516,675 children) depend on the Supplemental Nutrition Assistance Program (SNAP), and approximately 117,000 families rely on the Temporary Assistance for Needy Families (TANF).

Ongoing global and national crises and their economic effects have made it more difficult for many low-income households, many of which are disproportionately Indigenous communities and communities of color, to afford food and other basic needs. In March 2020, state and local governments used the temporary SNAP Emergency Allotment (EA), and administrative and programmatic flexibilities pursuant to Federal law, to provide extended and expanded benefits.

However, these provisions were temporary and some have expired. Given continued economic pressures, it is important that the Federal government continue to extend these vital administrative flexibilities and program enhancements which allow states and local governments to continue providing SNAP benefits in the most effective and equitable manner.

The County will continue to support and advocate for proposals that provide increased funding, preserve and extend administrative flexibilities, expand program access/simplification, and align eligibility requirements between SNAP and TANF. The County also supports proposals that strengthen, expand, align, and streamline the eligibility process for other federally funded nutrition programs, including the Special Supplemental Nutrition Program for Women, Infants, and Children (WIC), Older Americans Act, and child nutrition programs.

The County urges Congress and the Administration to advance proposals that:

- Make it easier for college students to be eligible for SNAP benefits, eliminate burdensome reporting and recertification requirements for SNAP and other assistance programs, and waive initial certification and recertification interviews for SNAP.
- Help states and counties to address the surge in fraudulent skimming and theft of TANF and SNAP benefits on electronic benefits transfer (EBT) cards.
- Reauthorize and increase funding for the TANF block grant.
- Reauthorize the Farm Bill.
- Make permanent the increases and changes the American Rescue Plan of 2021 made to the Child Tax Credit and Earned Income Tax Credit.
- Exclude cash payments from publicly funded guaranteed income programs from the income calculations of all public assistance programs.

R.J. LYERLY
Chief Legislative Representative

RJLyerly@ceo.lacounty.gov
W: (202) 393-2404 | C: (202) 498-5011



Public Infrastructure

Los Angeles County supports proposals that advance infrastructure, environmental services, and transportation projects while incorporating climate resilience, improving constituent experiences, strengthening local resource sustainability, and promoting equitable partnerships and contracts.

Los Angeles County manages a diverse array of projects and infrastructure from harbors and airports to roads and waterways throughout the various environments and geographies of the region. Los Angeles County Public Works is the primary public infrastructure agency for the County, delivering crucial 21st-century infrastructure and essential services to over 10 million people across a 4,000-square-mile regional service area including 88 incorporated cities.

The County supports proposals that:

- Enhance the capacity of local governments and the states to finance and accelerate the delivery of key regional infrastructure projects in a timely and environmentally conscious manner.
- Reduce barriers to the participation of non-governmental organizations and small businesses in private-public partnerships and contracting opportunities.
- Accelerate and prioritize the development of infrastructure that benefits disadvantaged communities, fulfills equity goals, maintains beneficial use of waterbodies, and ensures a diverse public infrastructure workforce.
- Incentivize innovations and pilot programs for infrastructure and service delivery, such as construction permitting, environmental services, water system management, and transportation development.
- Ease and streamline procedures to work with federal partners, empower local agencies with more flexibility or access to funding, to improve the physical infrastructure for street safety, commuting needs, mobility, water, energy, and environmental services.

Support from our federal partners can help ensure a consistently high standard of water service for everyone, eliminate traffic-related fatalities, fortify our communities against the escalating threats of climate change, and keep our communities clean. Federal support can help Los Angeles County further improve shoreline resilience and prioritize nature-based living adaptations which ensure public access and wildlife habitat protections.

The County urges Congress and the Administration to advance proposals that:

- Support sediment management and debris removal from flood control facilities.
- Allow for streamlined operation and maintenance of the Los Angeles County Drainage Area channels by transferring this responsibility to the Los Angeles County Flood Control District through WRDA 2024.
- Allow for local jurisdictions to transition to unleaded aviation gasoline.
- Adopt Maximum Contaminant Levels for per- and poly-fluoroalkyl substances and provide funding for their elimination from water sources.

R.J. LYERLY

Chief Legislative Representative

RJLyerly@ceo.lacounty.gov
W: (202) 393-2404 | C: (202) 498-5011



Justice Reform & Victims Assistance

Los Angeles County supports efforts that advance national reforms for adults and youth involved in the criminal legal system, including increasing resources and access to alternatives to incarceration and rehabilitative services. Additionally, the County urges Congress to increase funding for services and aid for victims of crime.

The Los Angeles County Board of Supervisors has taken historic steps over the last several years to reduce the County's over-reliance on incarceration of justice-impacted populations. The County is committed to fulfilling the "Care First, Jails Last" vision which prioritizes care and rehabilitation of adults and youth involved with the criminal legal system. This involves providing mental health, substance use treatment, housing, development, training, reentry, and pretrial services. Additionally, the Board of Supervisors supports increasing aid to victims of domestic violence, sexual assault, and human trafficking. Such efforts necessitate a robust multi-disciplinary effort, including a continued and expanded partnership with the Federal government.

To that end, the County supports federal legislative proposals that support the County's goals to:

- Divert adults and youths from incarceration and into rehabilitative, health- focused, and care-first systems.
- Mitigate disparities in the juvenile and criminal legal systems based on racial, economic, or immigration status.
- Strengthen law enforcement transparency, accountability, and policing reforms.
- Increase funding and flexibility to use federal health benefits for the incarcerated population, including the mentally ill.
- Support increased funding and eligibility for resources and support, including but not limited to, the areas of housing, mental health, substance use disorders, development, employment, education, and training for youth and adults impacted by the criminal legal system.
- Fund services and supports for victims of crime.

The County urges Congress and the Administration to advance proposals that:

- Support law enforcement transparency, accountability, and policing reforms.
- Expand Medicaid to more persons, including pre-trial individuals in state and local detention facilities (including by lifting the Medicaid Inmate Exclusion policy), and also individuals currently ineligible for Medicaid services due to placement in a facility categorized as an Institution for Mental Disease (IMD).
- Increase funding levels for the Victims of Crime Act's Crime Victims Fund.

R.J. LYERLY

Chief Legislative Representative

RJLyerly@ceo.lacounty.gov
W: (202) 393-2404 | C: (202) 498-5011



Support for Immigrant Residents & their Families

Los Angeles County supports proposals that ensure that all individuals, regardless of immigration status, are treated humanely and have access to services and due process protections.

Los Angeles County is the most populous and diverse county in the nation. With more than a third of its 10 million residents having been born outside the United States, the County has one of the largest immigrant populations in the nation. Immigrants are deeply integrated into nearly all aspects of County life.

The County supports proposals that:

- Provide immigration reforms that offer lawful immigration status, and increased visa opportunities, including for Deferred Action for Childhood Arrivals (DACA), Temporary Protected Status (TPS) beneficiaries and others, such as humanitarian-based visa recipients.
- Provide adequate funding for legal representation for indigent immigrants in immigration court proceedings, end civil incarceration for noncitizens for immigration proceedings, and protect people from inhumane detention conditions.
- Assist with the reunification of families separated at the United States-Mexico border and support unaccompanied children and their families.
- Expedite lawful permanent status for refugees and asylum seekers.
- Increase federal resources to address the backlog of U.S. Citizenship Immigration Services (USCIS) cases in the region.

Support from federal partners can help to advance the well-being of immigrants and their families. The County has taken action to ensure that immigrants, from unaccompanied children and refugees to longtime County residents in removal proceedings, have the support and services they need to remain and thrive in the Los Angeles region. The Board of Supervisors has taken action to advance policies that ensure all residents, regardless of immigration status, are treated humanely, afforded due process protections, provided access to counsel and necessary services without fear of immigration consequences, and given the opportunity to secure permanent immigration status.

The County urges Congress and the Administration to advance proposals that:

- Ensure local jurisdictions have resources to support new migrant arrivals.
- Provide funding for legal and other support services for immigrants who are victims of domestic violence, human trafficking, and labor exploitation crimes.
- Provide access to basic public services and benefits regardless of immigration status.

R.J. LYERLY

Chief Legislative Representative

RJLyerly@ceo.lacounty.gov
W: (202) 393-2404 | C: (202) 498-5011

Board of Supervisors Priorities



CHILD PROTECTION

Enhanced well-being and success for systems-involved youth
dcfs.lacounty.gov



IMMIGRATION

Immigrant protection and advancement
oia.lacounty.gov



HOMELESSNESS

Coordination of community-based services and housing resources
homeless.lacounty.gov



POVERTY ALLEVIATION

Aiming to establish sustainable and long-term poverty alleviation
ceo.lacounty.gov/pai



ENVIRONMENTAL HEALTH OVERSIGHT & MONITORING

Monitoring for a cleaner and healthier environment
publichealth.lacounty.gov/eh



ANTI-RACISM, DIVERSITY AND EQUITY

An anti-racist Los Angeles County policy agenda
ceo.lacounty.gov/ardi



CARE FIRST, JAILS LAST

Alternatives to incarceration and reduced involvement with the justice system for vulnerable adult and youth populations
jcod.lacounty.gov
dyd.lacounty.gov
dhs.lacounty.gov/office-of-diversion-and-reentry



SUSTAINABILITY

Making our communities healthier, more livable, economically stronger, more equitable, more resilient, and more sustainable
cso.lacounty.gov



ALLIANCE FOR HEALTH INTEGRATION

Streamlined access to integrated health care
ceo.lacounty.gov/alliance-for-health-integration

Los Angeles County Board of Supervisors

Lindsey P. Horvath, Chair
Third District

Hilda L. Solis
First District

Holly J. Mitchell
Second District

Janice Hahn
Fourth District

Kathryn Barger
Fifth District

Fesia A. Davenport
Chief Executive Officer

Samara Ashley
Assistant Chief Executive Officer

R.J. Lyerly
Chief Legislative Representative



**Legislative
Affairs &
Intergovernmental
Relations**

LEGISLATIVE AFFAIRS AND INTERGOVERNMENTAL RELATIONS

660 North Capitol St. N.W. Suite 430

Washington D.C. 20001

(202) 393-2404

ceo.lacounty.gov/legislative-affairs-and-intergovernmental-relations/

bos.lacounty.gov

lacounty.gov

