



**Legislative
Affairs &
Intergovernmental
Relations**

One Goal

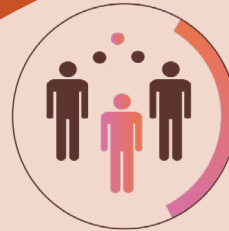
To Enrich Lives Through
Effective & Caring Service

2024

LOS ANGELES COUNTY
State Legislative Priorities

About Los Angeles County

POPULATION



MILLION RESIDENTS

Los Angeles County has the largest population of any county in the nation—with nearly 10 million residents, who account for approximately 27 percent of California's population.

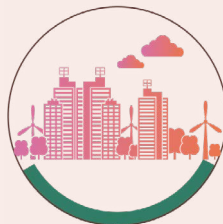
UNINCORPORATED AREAS



120-125 UNINCORPORATED AREAS

More than one million residents live in approximately 120-125 unincorporated areas, whose municipal services are provided by the County.

CITIES



88 CITIES

The other nearly 9.3 million residents live in 88 cities within the County, located throughout 4,084 square miles (larger than the combined states of Delaware and Rhode Island).

DIVERSITY



140 CULTURES

A diverse county, with more than 140 cultures and as many as 224 languages.

INDUSTRIES



LARGEST PORT COMPLEX

Home to the largest port complex in the nation, a thriving aerospace research and development sector, the entertainment capital of the U.S., and the nation's largest manufacturing center.



L.A. County's State Priorities

The Los Angeles County Board of Supervisors oversee a comprehensive government structure that provides vital public services, including health and human services, public safety, fire protection, and essential infrastructure services to 88 cities and approximately 120-125 unincorporated communities.

The County is proactively engaged in enhancing the physical, social, and economic well-being of its residents through fundamental safety-net services, as well as proactive local programs, including those geared towards combating homelessness, reforming the adult and youth justice systems, protecting the environment, and addressing equity issues. State investments in the County's critical services and initiatives help to maximize efficiencies and cost savings in programs that aid the most vulnerable populations.

Investing in the County's residents and physical infrastructure will also result in greater social and economic gains throughout the nation.

While the County has many priorities, they are part of one main goal, to enrich the lives of our almost 10 million residents through effective and caring service. In order to continue improving the lives of its residents and the economic vitality of the region, Los Angeles County needs on-going policy and funding support from the Legislature and the Administration.

Los Angeles County's State advocacy efforts in 2024 will be primarily concentrated on:

AFFORDABLE HOUSING & HOMELESS ASSISTANCE

CHILD WELFARE & EARLY CHILDHOOD DEVELOPMENT

DIGITAL DIVIDE

ECONOMIC & WORKFORCE DEVELOPMENT

ENVIRONMENT & SUSTAINABILITY

HEALTH & PUBLIC HEALTH

BEHAVIORAL HEALTH CARE

PUBLIC INFRASTRUCTURE

JUSTICE REFORM & VICTIMS ASSISTANCE



Affordable Housing & Homeless Assistance

Los Angeles County supports proposals that fund housing and homeless assistance programs, and that residents facilitate a coordinated and comprehensive response to the affordable housing crisis.

Faced with one of the most expensive housing markets in the nation, the County remains committed to closing the affordable housing gap and accelerating its response to homelessness. Since 2018, the County has invested \$891.5 million in affordable housing development, which has funded, or will fund the construction of approximately 10,039 units, and has been used to leverage \$4.94 billion in public and private funds. In addition, the Los Angeles County Development Authority has helped house over 25,000 low-income households through the federal Housing Choice Voucher program.

The County has also partnered with public entities and regional stakeholders to implement a comprehensive plan to address homelessness. Since July 2017, approximately 90,000 formerly homeless residents have been permanently housed and more than 137,000 have moved into interim housing through programs funded by Measure H, a quarter-cent sales tax approved by local voters in 2017, and other public funding sources. Despite these efforts, more than 75,000 County residents experience homelessness on a given night, representing a nine percent increase from last year.

In January 2023, the Board of Supervisors unanimously approved a Local State of Emergency on Homelessness to expand and expedite the County's rehousing efforts. Led by the County's Homeless Initiative, this emergency response is organized into four strategic missions of Encampment Resolution, Housing, Mental and Substance Use Disorder Services, and Eviction Protection.

To advance these local strategies, the County supports proposals that will:

- Increase affordable housing production, preserve existing affordable units, and provide additional tenant protections.
- Expedite and increase the availability of interim, supportive, and affordable housing options for homeless residents.
- Increase and provide flexible resources for local homeless response systems, housing interventions and supportive services.
- Provide financial and legal aid and other supports to low-income tenants and small, independent landlords facing financial hardship.

The County urges Legislature and the Administration to advance proposals that:

- Revise the definition of emergency in the State Public Contracting Code to expedite the construction of new interim and supportive housing projects during a homelessness emergency.
- Provide counties with ongoing and flexible funding for housing and supportive services.
- Promote a locally coordinated response to homelessness, such as permanently authorizing AB 728 (Santiago, 2019) to assist counties in targeting prevention services to those at the highest risks of becoming unhoused.

Marvin Deon II
Chief Legislative Representative

MDeon@ceo.lacounty.gov
W: (916) 441-7888 | C: (916) 261-9642



Child Welfare

Los Angeles County supports proposals that promote child safety, well-being, and permanency through services and programs that strengthen families, keep children at home when possible, and connect them with stable, loving homes in times of need.

The Los Angeles County Department of Children and Family Services (DCFS) is one of the largest county-governed child protective services agencies in the nation and is responsible for ensuring the safety of more than two million children across 88 diverse cities in Los Angeles County.

DCFS prioritizes child safety while emphasizing strengths over deficits, addressing underlying needs over behaviors, and instilling empowerment over helplessness. DCFS partners with community-based organizations to offer a range of services focused on well-being including parenting education courses, housing assistance, medical screenings, tutoring, childcare, and general family friendly activities. For children who cannot safely remain in their homes, DCFS prioritizes connecting children with their immediate relatives and next of kin. DCFS also invests significant resources to recruit, approve, prepare, and support Resource Families of all diverse backgrounds who can provide healthy, stable, and loving homes.

The County supports proposals that promote and fund the development of community-based upstream prevention efforts to keep families together without the need for child welfare involvement; expand community-based services to support family reunification when necessary; and provide counties with the flexibility to support the families they serve with robust services including: case management, mental health, educational attainment, career development, and stable housing, all of which promote self-sufficiency among transition-age foster youth, non-minor dependents, and former foster youth.

Support from State legislators and agencies can help expand support and services for resource families, including relative/kin caregivers. Countywide, more than half of the children in foster care are placed with relatives, which is unmatched by any other large child welfare system in the nation.

The County urges Legislature and the Administration to advance proposals that provide:

- Support for the County's efforts to successfully implement child welfare reform (e.g., the Family First Prevention Services Act) without disruption to vital services.
- Investments in critical services to improve outcomes for vulnerable children, youth, and families and address racial disparities while enhancing child safety, well-being and permanency.
- Comprehensive trauma informed services and robust continuum of placement resources tailored to vulnerable children and youth with unique and complex needs, including Commercial Sexual Exploitation of Children victims.

Marvin Deon II
Chief Legislative Representative

MDeon@ceo.lacounty.gov
W: (916) 441-7888 | C: (916) 261-9642



Digital Divide

Los Angeles County urges State policy makers and leaders to advance proposals that provide funding for the development and expansion of broadband infrastructure and reliable, affordable networks to bridge the digital divide to increase access to high-speed internet for as many households as possible, particularly in underserved communities.

In Los Angeles County, more than 20 percent of households lack broadband service. In largely these same areas, the average household income is less than \$50,000 per year, and people of color are more likely to be the majority of residents. Households that do not have equitable access to and use of reliable high-speed broadband or internet services, internet-enabled devices, training, and support are unable to fully participate in education and employment opportunities and are severely hampered in their overarching capacity to engage in our democracy and the 21st century economy.

Access to high-speed broadband, internet and related resources is essential to accessing health services, education, economic resources, County services, and job opportunities.

Regional, State, federal, and private partners are engaging in collaborative efforts to advance digital equity and inclusion through the Infrastructure Investment and Jobs Act. The historic amount of federal investment will support broadband infrastructure deployment and digital equity and inclusion programming. This includes the development and implementation of key information and communication technologies that are needed in a thriving digital equity ecosystem.

The County will support proposals that:

- Incentivize private investment in broadband infrastructure in historically underserved and rural communities.
- Use innovative, short-term, and long-term strategies to provide free or low-cost high-speed internet, and related devices to disadvantaged communities.
- Expand and modernize Wi-Fi at County facilities and other public facilities to help close the digital divide for residents in disadvantaged and broadband deficient communities.

Los Angeles County will continue to support legislation and regulations that advance digital equity, and that support the development and expansion of broadband infrastructure and reliable, affordable networks to bridge the digital divide to increase access to high-speed internet for as many households as possible, particularly in underserved communities.

The County urges Legislature and the Administration to advance proposals that:

- Create workforce development pipeline programs in the broadband, fiber, and related telecommunications infrastructure industries.
- Establish equitable funding opportunities from the Broadband Equity, Access, and Deployment (BEAD) Program implementation.
- Advance affordable, robust broadband and internet services.

Marvin Deon II
Chief Legislative Representative
MDeon@ceo.lacounty.gov
W: (916) 441-7888 | C: (916) 261-9642



Economic & Workforce Development

Los Angeles County supports proposals that promote inclusive and sustainable economic development, stimulate quality job growth reduce poverty, and increase economic mobility for economically disadvantaged residents.

Through the newly developed Los Angeles County Department of Economic Opportunity, the County is investing in equitable and innovative economic and workforce development programs and services, as well as resources for workers, entrepreneurs and small businesses, and high road industries. Under this centralized agency, the County is strategically aligning workforce and business programs and services across departments, neighboring public sector partners training partners, and community-based associations to develop and foster a local, diverse, and qualified workforce that supports inclusive growth within major industries.

In 2024, the County is also modernizing and relaunching its 18 America's Job Centers of California to focus on providing equitable pathways to careers for priority populations in key industries, while also expanding services within the Office of Small Business – Entrepreneurship Center to help small businesses start, grow, and thrive. These efforts are seeding a resilient small business and supplier base that will lead to building a sufficient and sustainable social, economic infrastructure and promoting a competitive region that prioritizes preserving a skilled workforce and attracting new regional investments.

To advance these efforts, the County supports proposals that will:

- Increase resources for workforce development and training programs that prepare workers for quality jobs and career pathways, as well as for technology innovation and solutions that anticipate the future of work.
- Reduce barriers to employment, address racial and gender disparities in employment outcomes, and increase opportunities for workers and businesses with the highest employment needs.
- Increase capacity building and economic opportunities for small businesses, microbusinesses, entrepreneurs, social enterprises, and nonprofits.
- Increase economic resiliency for workers, small businesses, and industries impacted by natural or man-made disasters, and other economic disruptions.
- Stimulate regional investment and business development and encourage private sector participation in advancing equitable and sustainable growth.
- Create opportunities to expand and codify requirements for increased community benefits in infrastructure and other workforce and economic development impacting investments.
- Prioritize direct investment in public infrastructure and/or revitalization projects that advance climate resiliency, environmental and economic justice, and broadband access while optimizing community benefits.

The County urges Legislature and the Administration to advance proposals that:

- Support funding to redevelop County-owned properties to meet the needs of the community.
- Expand apprenticeship opportunities and pathways into the building trades, public sector, and non-traditionally apprenticed sectors.
- Ensure the prompt and appropriate deployment of funding for California Jobs First and other regional planning and implementation grants that recognize the unique needs of the greater LA County area and foster regional leadership and alignment.

Marvin Deon II
Chief Legislative Representative

MDeon@ceo.lacounty.gov
W: (916) 441-7888 | C: (916) 261-9642



Environment & Sustainability

Los Angeles County supports proposals that address environmental issues and improve the region's sustainability through the promotion of green infrastructure, environmental justice, and the incorporation of climate resiliency measures.

Los Angeles County manages public access to recreational lands and programs, maps climate vulnerability, implements strategies for a green transition, and addresses the localized impacts of climate change within communities and on public amenities. In a region as large and urbanized as Los Angeles County, many of the most pressing sustainability issues are best solved using a regional approach through collaboration across city and county boundaries. The twelve goals of the OurCounty Sustainability Plan are the regional framework for Los Angeles to guide collaborative action.

The County supports proposals that:

- Promote climate resiliency and provide sufficient funding to encourage and incentivize production, methods, technologies, and jobs that advance clean manufacturing, reduce greenhouse gases.
- Increase local water supply, ensure access to clean water, and improve water quality, as well as support sustainable water infrastructure and conservation.
- Restore, increase, and protect natural resource areas, such as mountains, forests, beaches, natural areas, preserves, wildlife/wildflower sanctuaries, greenways, waterways, riparian corridors, trails, degraded lands/brownfield sites, and other natural environments containing ecological, geological, habitat, cultural, recreational, native biodiversity, and scenic value.
- Fund or promote projects that mitigate the effects of climate change, advance regenerative urban agriculture, improve cooling strategies, reduce environmental pollutants, strengthen natural spaces within communities, and increase heat relief access in underserved areas.
- Incorporate plans, such as the "OurCounty" Sustainability Plan and County's Park Needs Assessment Plus (PNA+) 30x30 Plan and, LA County Water Plan into programs, legislation, policies, and funding opportunities.

Support from State partners can help ensure that the County can fully use federal funding and assistance to ensure an equitable transition to a green economy, mitigate climate change risks, and promote a more resilient region. Further, assistance will help maintain and develop public-access amenities across the region which improve quality of life and livability.

The County urges Legislature and the Administration to advance proposals that:

- Incorporate local environmental plans and strategies into legislative and administrative actions that will positively benefit the region.
- Incorporate County priorities into major funding opportunities and proposed bond measures.
- Conserve and increase natural spaces in urban environments, including through brownfield site rehabilitation and reuse.

Marvin Deon II
Chief Legislative Representative

MDeon@ceo.lacounty.gov
W: (916) 441-7888 | C: (916) 261-9642



Health Care Services & Public Health

Los Angeles County urges the State to continue supporting efforts that expand and enhance the local health care safety net, reduce health inequities, and improve the population's health in the County.

The County's Department of Health Services (DHS) is the second largest municipal health system in the nation, providing care for approximately 600,000 patients through its integrated system of 30 health centers and four hospitals. The County's Department of Public Health (Public Health) operates 39 programs and 14 public health centers with the support of over 5,000 public health professionals. Public Health oversees environmental health, disease control, and community and family health programs countywide.

Strong and robust health care delivery and public health systems are critical for improving the health and well-being of the County's diverse communities, helping prevent and treat physical and behavioral health conditions, and reducing health inequities across the region. Medi-Cal is essential for providing healthcare for the County's most vulnerable residents, especially through California's Medicaid 1115 and 1915(b) waivers that aim to transform and improve the quality of care, access, and efficiency of healthcare services. In addition, the Budget Act of 2023 re-introduced a Managed Care Organization (MCO) Tax to allocate \$150 million annually to public healthcare systems starting in 2025, but this amount is capped and non-increasing over time. These funds are crucial for the County, considering that public healthcare systems have historically faced underfunding, even as they serve a significant portion of Medi-Cal beneficiaries and uninsured patients.

The County supports State proposals that will:

- Ensure a fair and equitable distribution of the MCO tax revenue to public healthcare systems, reflecting their critical role in providing Medi-Cal and uninsured care, and addressing their structural financial challenges.
- Effectively prepare and respond to emerging threats, ongoing and future public health emergencies, and other disasters.
- Build up community health, disease prevention, and disease control programs.
- Broaden wellness efforts to address the root causes of physical and behavioral health conditions, including but not limited to sexually transmitted infections (STIs) and the substance use and overdose epidemics.
- Help recruit and retain workforce for the County's health care systems.

The overall health and well-being of a community is critically important to preventing physical and behavioral health conditions and for reducing health inequities. A robust public health infrastructure system is essential to not only preventing and responding to health emergencies, disasters, and emerging threats, but also to address the root causes of physical and behavioral health conditions, including inequity, environmental justice, and community health, particularly for the most vulnerable populations.

The County urges Legislature and the Administration to advance proposals that would:

- Protect and expand Medi-Cal funding, eligibility, and covered services, including through the comprehensive implementation of the CalAIM initiative and the State's 1115 and 1915(b) waivers and related funding mechanisms.
- Strengthen the local public health infrastructure and workforce, and increase funding for infectious disease prevention and control, public health emergency preparedness, health promotion efforts, substance use disorder prevention and treatment, environmental health, and health equity for traditionally underserved and vulnerable communities.
- Address the growing need for health care workforce within County's health care systems, with particular focus on improving both the quality and quantity of these workforces.

Marvin Deon II
Chief Legislative Representative

MDeon@ceo.lacounty.gov
W: (916) 441-7888 | C: (916) 261-9642



Behavioral Health Care

Los Angeles County urges the State to support efforts that increase access to critical services for those living with substance use disorders and severe persistent mental illness, as well as those whose behavioral health has been adversely impacted by a multitude of societal stressors.

The growing need for mental health and substance use disorder treatment and services continues to outpace available resources at all levels of care, including acute inpatient, outpatient, and residential facilities. The County looks forward to additional State funding opportunities to broaden the local behavioral health infrastructure. Specifically, the County looks to expand community-based facilities like Adult Residential Facilities (also known as Board and Cares), which are a vital part of the County's mental health safety net and homeless prevention networks for treating the most vulnerable citizens. Additionally, the County looks to expand and strengthen the behavioral health workforce, including for substance use counselors and peer support specialists.

The County supports State proposals that will:

- Advance the State's pursuit of an 1115 waiver to permit Medicaid Institutions of Mental Disease (IMD) treatment and increased bed capacity for serious mental illness or serious emotional disturbance.
- Support the State's pursuit to leverage the federal 1115 waiver opportunity, including establishing a county option to receive Federal Financial Participation (FFP) for services provided during short-term stays in IMDs.
- Provide individuals with mental illness access to critical services in the most appropriate, least restrictive setting.
- Increase flexibility for Mental Health Services Act (MHSA) funding to more comprehensively address the needs of local communities, including individuals experiencing homelessness.
- Create solutions to stabilize MHSA revenue variability and make it easier for the County to engage in long-term planning with MHSA revenue.
- Expand funding for public behavioral health services, workforce and placements/housing.
- Provide dedicated ongoing funding for public guardians/public conservators services.
- Expand substance use harm reduction policies and programs, including lower barrier substance use disorder treatment options.

Finally, the County urges the State to provide sufficient funding and flexibility to counties to support the ongoing implementation of the Community Assistance, Recovery & Empowerment (CARE) Act (SB 1338, 2022). Los Angeles County began implementing the CARE Act on December 1, 2023, a year earlier than the statutorily mandated date. The County estimates that in addition to leveraging appropriate Medi-Cal funding, it will need additional annual funding to fully implement the program countywide.

The County urges Legislature and the Administration to advance proposals that:

- Support the State's pursuit to leverage the federal 1115 waiver opportunities, including as related to IMDs.
- Increase flexible use of the MHSA funding, eliminate MHSA percentage funding requirements, and create solutions to stabilize MHSA revenue variability.
- Support broadened access to behavioral health services, including low barrier substance use disorder treatment.
- Provide dedicated funding to Public Guardians/Public Conservators.
- Support funding for programs that grow and strengthen the behavioral health workforce, including substance use disorder and peer counselors.
- Provide sufficient funding and flexibility to counties to support the implementation of the CARE Court Act (SB 1338, 2022).

Marvin Deon II
Chief Legislative Representative

MDeon@ceo.lacounty.gov
W: (916) 441-7888 | C: (916) 261-9642



Public Infrastructure

Los Angeles County supports proposals that advance infrastructure development, environmental services, and transportation projects while incorporating climate resilience, improving constituent experiences, strengthening local resource sustainability, and promoting equitable partnerships and contracts.

Los Angeles County manages a diverse array of infrastructure projects from marine harbors and airports to roads and waterways throughout the various environments and geographies in the region. The Los Angeles County Department of Public Works is the primary public infrastructure agency for the County, delivering critical 21st-century infrastructure and essential services to over 10 million people across a 4,000-square-mile regional service area including 88 incorporated cities.

The County supports proposals that:

- Strengthen regional water supply and stormwater infrastructure, water cleanliness, meet water conservation and resiliency goals, and sustainability.
- Prioritize disaster risk mitigation, prevention, and response efforts appropriate for urban and rural communities.
- Expedite or assist in financing the acceleration of the deployment and maintenance of public infrastructure that incorporates street safety, for environmental services, energy needs, electrification, and new mobility and commuting needs.
- Streamline and clarify processes that empower local agencies with more flexibility or access to funding or implement services.
- Incentivize innovations or the use of alternative methods that are consistent with the County's goals for equity and sustainability for infrastructure, County construction projects, and implementation of County goals or projects.

Support from State partners can help ensure a consistently high standard of water services for everyone, eliminate traffic-related fatalities, fortify our communities against the escalating threats of climate change, and keep our communities clean. Streamlining contracting processes can help Los Angeles County expedite homeless housing projects, such as the Hilda Solis Care First Village which leveraged emergency contracting authorization. Support can help Los Angeles County improve shoreline resilience and prioritize nature-based living adaptations which ensure public access and wildlife habitat protections.

The County urges Legislature and the Administration to advance proposals that:

- Revise the definition of emergency in the Public Contracting Code to include homelessness.
- Modernize the Los Angeles County Flood Control Act by eliminating the outdated \$4.5 million borrowing limit, among other financial limitations.
- Provide funding for sediment management and debris removal from flood control facilities to mitigate negative impacts to regional water supply.
- Fund projects that improve harbors and the coastal environment to mitigate the impacts of climate change and environmental degradation.

Marvin Deon II
Chief Legislative Representative

MDeon@ceo.lacounty.gov
W: (916) 441-7888 | C: (916) 261-9642



Justice Reform & Victims Assistance

Los Angeles County supports efforts that advance statewide reforms to the criminal legal system, including local efforts to reform pre-trial services, promote diversion opportunities, expand rehabilitative services and programming for the incarcerated population, and increase reentry support for adults and youth. Additionally, the County urges the Legislature to increase funding for services and aid for victims of domestic violence, sexual assault, and human trafficking.

The Los Angeles County Board of Supervisors has taken historic steps to transform the current justice system into one that is centered on “Care First, Jails Last.” This involves expanding services and programming to help prevent individuals from ever falling into the criminal legal system, providing care and rehabilitation to the incarcerated population, and supporting adults and youth as they re-enter our communities. The County is taking the next steps to develop a new model for pretrial services and transform our response to crime and conflict by providing the needed care and supports. Such major reforms necessitate a robust multi-disciplinary effort, including a continued and expanded partnership with the State.

The County supports State proposals that will:

- Reduce the reliance on jails and mass incarceration.
- Divert adults and youths from incarceration and into rehabilitative, health-focused, and care-first systems.
- Fund and implement pretrial reforms and associated best practices to reduce detention while maintaining public safety.
- Mitigate disparities in the juvenile and criminal legal systems based on racial, economic, or immigration status.
- Support increased funding and eligibility for resources and support, including but not limited to, the areas of housing, mental health, substance use disorders, development, employment and training for youth and adults impacted by the criminal legal system.
- Fund services and supports for victims of crime.

The County urges Legislature and the Administration to advance proposals that:

- Provide flexible and commensurate funding for legal representation for the Community Assistance, Recovery, and Empowerment Act (CARE Act) Court.
- Establish Los Angeles County’s independent pretrial services agency and provide additional funding for community-based solutions for pre-trial services.
- Increase funding for non-carceral facilities, services, housing, and treatment to support the justice-involved population and individuals diverted from the criminal justice system.
- Augment funding for services and support for victims of crime.

Marvin Deon II
Chief Legislative Representative

MDeon@ceo.lacounty.gov
W: (916) 441-7888 | C: (916) 261-9642

Board of Supervisors Priorities



CHILD PROTECTION

Enhanced well-being and success for systems-involved youth
dcfs.lacounty.gov



IMMIGRATION

Immigrant protection and advancement
oia.lacounty.gov



HOMELESSNESS

Coordination of community-based services and housing resources
homeless.lacounty.gov



POVERTY ALLEVIATION

Aiming to establish sustainable and long-term poverty alleviation
ceo.lacounty.gov/pai



ENVIRONMENTAL HEALTH OVERSIGHT & MONITORING

Monitoring for a cleaner and healthier environment
publichealth.lacounty.gov/eh



ANTI-RACISM, DIVERSITY AND EQUITY

An anti-racist Los Angeles County policy agenda
ceo.lacounty.gov/ardi



CARE FIRST, JAILS LAST

Alternatives to incarceration and reduced involvement with the justice system for vulnerable adult and youth populations
jcod.lacounty.gov
dyd.lacounty.gov
dhs.lacounty.gov/office-of-diversion-and-reentry



SUSTAINABILITY

Making our communities healthier, more livable, economically stronger, more equitable, more resilient, and more sustainable
cso.lacounty.gov



ALLIANCE FOR HEALTH INTEGRATION

Streamlined access to integrated health care
ceo.lacounty.gov/alliance-for-health-integration

Los Angeles County Board of Supervisors

Lindsey P. Horvath, Chair

Third District

Hilda L. Solis

First District

Holly J. Mitchell

Second District

Janice Hahn

Fourth District

Kathryn Barger

Fifth District

Fesia A. Davenport

Chief Executive Officer

Samara Ashley

Assistant Chief Executive Officer

Marvin Deon II

Chief Legislative Representative



**Legislative
Affairs &
Intergovernmental
Relations**

LEGISLATIVE AFFAIRS AND INTERGOVERNMENTAL RELATIONS

1100 K Street

Suite 400

Sacramento, California 95814

(916) 441-7888

ceo.lacounty.gov/legislative-affairs-and-intergovernmental-relations/

bos.lacounty.gov

lacounty.gov

