



Welcome

9-9-2020

HOW CAN THE COUNTY SUPPORT WOMEN 55+ GIVEN COVID-19 AND
THE IMPACTS OF 2020?

Introduction - Bea Olvera Stotzer

Governing Council Member – District 1



- Chair of the Women & Girls Governing Council
- CEO of NEW Capital

lacounty.gov/wgi-governing-council/

County of Los Angeles Women & Girls Initiative

❑ What is the WGI?

❑ Website

lacounty.gov/wgi/

❑ Social Media

❑ Facebook, Instagram, Twitter:

@LACWGI



About Us

Our Mission | Director's Message | Governing Council

❑ About Us

❑ Meetings

❑ Reports

❑ 100 years of the 19th Amendment

❑ Covid 19 information



Katherine Spillar



Beatriz Olvera Stotzer



Sandra Mendoza

Supervisor Ridley-Thomas - District 2 ↓



Anita DeFrantz



Araceli Campos



Sharon Shelton, M.A.

Supervisor Solis
← District 1



Kafi D. Blumenfield



Wendy Greuel



R. Christine Hershey

Supervisor Kuehl - District 3 ↑

County of Los Angeles Women & Girls Initiative – Who is the WGI?

[HOME](#)[ABOUT US](#)[MEETINGS](#)[REPORTS](#)[CENTENNIAL](#)[COVID-19](#)[CONTACT US](#)[About Us](#)[Our Mission](#)[Director's Message](#)[Governing Council](#)

Perla Hernandez Trumkul



Jane Templin



Dr. Carmen Estrada-Schaye

Supervisor Hahn - District 4

Supervisor Barger - District 5



Angela Underwood-Jacobs



Alice Petrossian



Jennifer Quan

County of Los Angeles Women & Girls Initiative – County Team



Executive Director
Abbe Land



Analyst
Nicole Bryant

Senior Secretary, Porsha Potts → No Photo Available

Consultants



Community Engagement
& Outreach Director
Imelda Padilla



Research Director
Jackie Filla



Sheila Kuehl
Policy Fellow
Marissa Ayala

WELCOME REMARKS

Los Angeles County Board of Supervisor
Janice Hahn - District 4



@SupJaniceHahn



@CountyofLA

Moderator – Dr. Carmen Estrada Schaye

Governing Council Member - District 4



- Entrepreneur & business owner
- University Educator, History & Women's Studies
- Doctoral in Institutional Management, Pepperdine University
- California State Senate Woman of Distinction

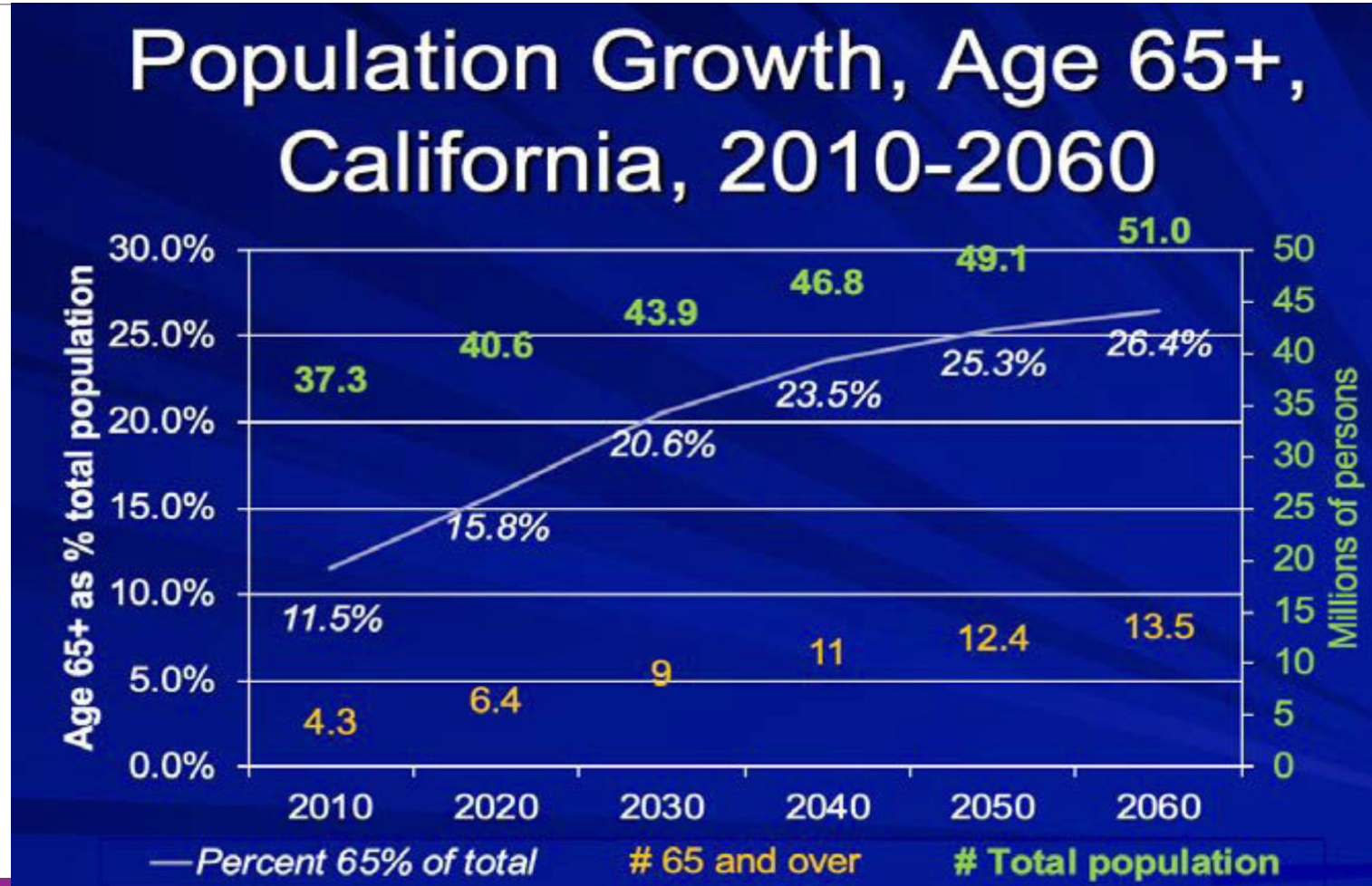
lacounty.gov/wgi-governing-council/

Panelists

- **Betsy Butler**- Chair of the *California Commission on Aging*
- **Sarah Dusseault**- Commissioner- *Los Angeles Homeless Services Authority (LAHSA)*
- **Jenna Hauss**- Director, Strategic Initiatives & Community Based Services – *ONEgeneration*
- **Adriana Mendoza**- Associate State Director- *AARP California*
- **Phyllis Willis**- Director of Senior Programs- *Watts Labor Community Action Center*



Population Growth of all 65+ in California



Source: California Department of Finance, 2016, P-3 database
<http://www.dof.ca.gov/Forecasting/Demographics/Projections/>

OLDER WOMEN DEMOGRAPHICS IN CA & LA COUNTY

IN CALIFORNIA

The percent of older adults in the total population will increase from 11.5% in 2010 to 26.4% in 2060. The fastest growth is among seniors age 75 and older.

By 2030, most of California's older adult population will be between age 65 and 75, with the most growth in the over-85 population, which will see an increase of approximately 61% from 2012.

IN LA COUNTY

Women ages 65 and older are becoming the fastest growing demographic group in Los Angeles County.

In sheer numbers, in LA COUNTY, as of 2019:

TOTAL # OF WOMEN: 4,905,898

TOTAL # OF WOMEN OVER 50: 1,365,252 (28% of LA COUNTY WOMEN)

Aged 50-64: 862,833

Aged 65-74: 306,926

Aged 75 and over: 195,493

OLDER WOMEN SPEND LATER LIFE IN POVERTY

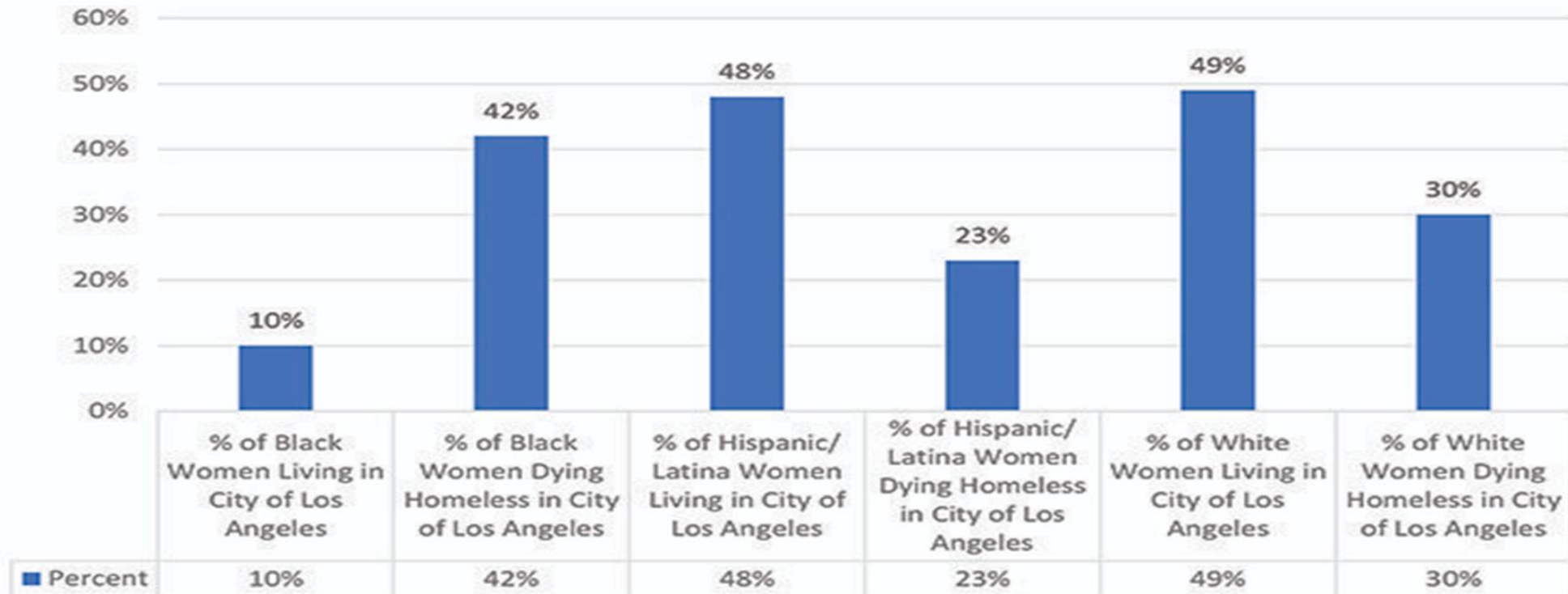
- In the US, **women are 80% more likely than men to be impoverished in retirement**
- **Women's unequal pay and lower wages over a lifetime results in a smaller social security check: Annually, men receive about \$18,000, while women receive only \$14,500 in Social Security**
- **Women work later in life to make up for the inability of Social Security to cover their basic living expenses.** They have less in savings/assets, pensions to make up the difference.
- In 2020, Covid-19 forced a lot of older women to **work risking their lives or to leave the workforce without a financial safety net.**
- In California, 50% of older women suffer from **malnutrition**

HOMELESSNESS AND LA'S OLDER WOMEN

In Los Angeles County, seniors are the fastest growing part of the homeless population.

Senior homeless population age 60 and older will grow more than 300% by 2030.

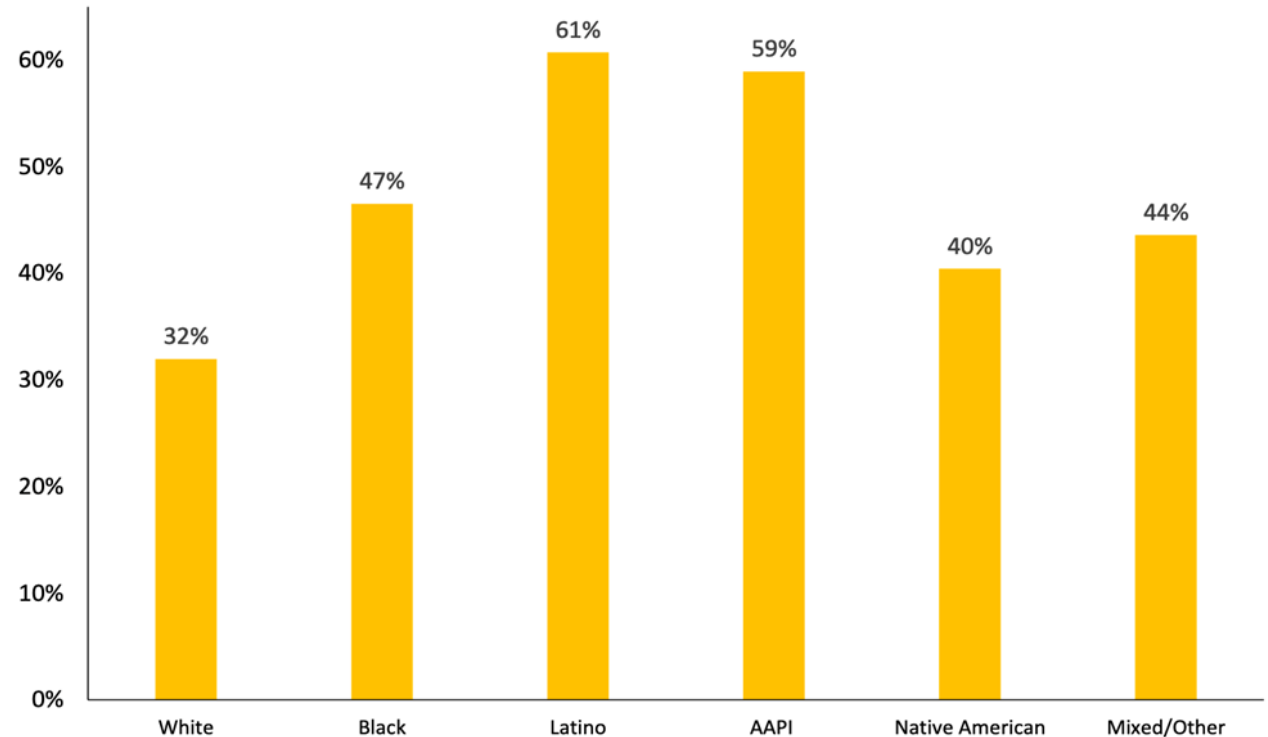
Women of color are disproportionately dying homeless, particularly Black women.



Isolation and Economic Security for LA County Seniors

- The share of seniors who live below 150% of the poverty line in LA County differs significantly by race, with Latinos and Asian American Pacific Islanders the most likely to be a part of this demographic.
- African American seniors in LA County are much more likely than others to live alone, without either family members or in assisted living centers.

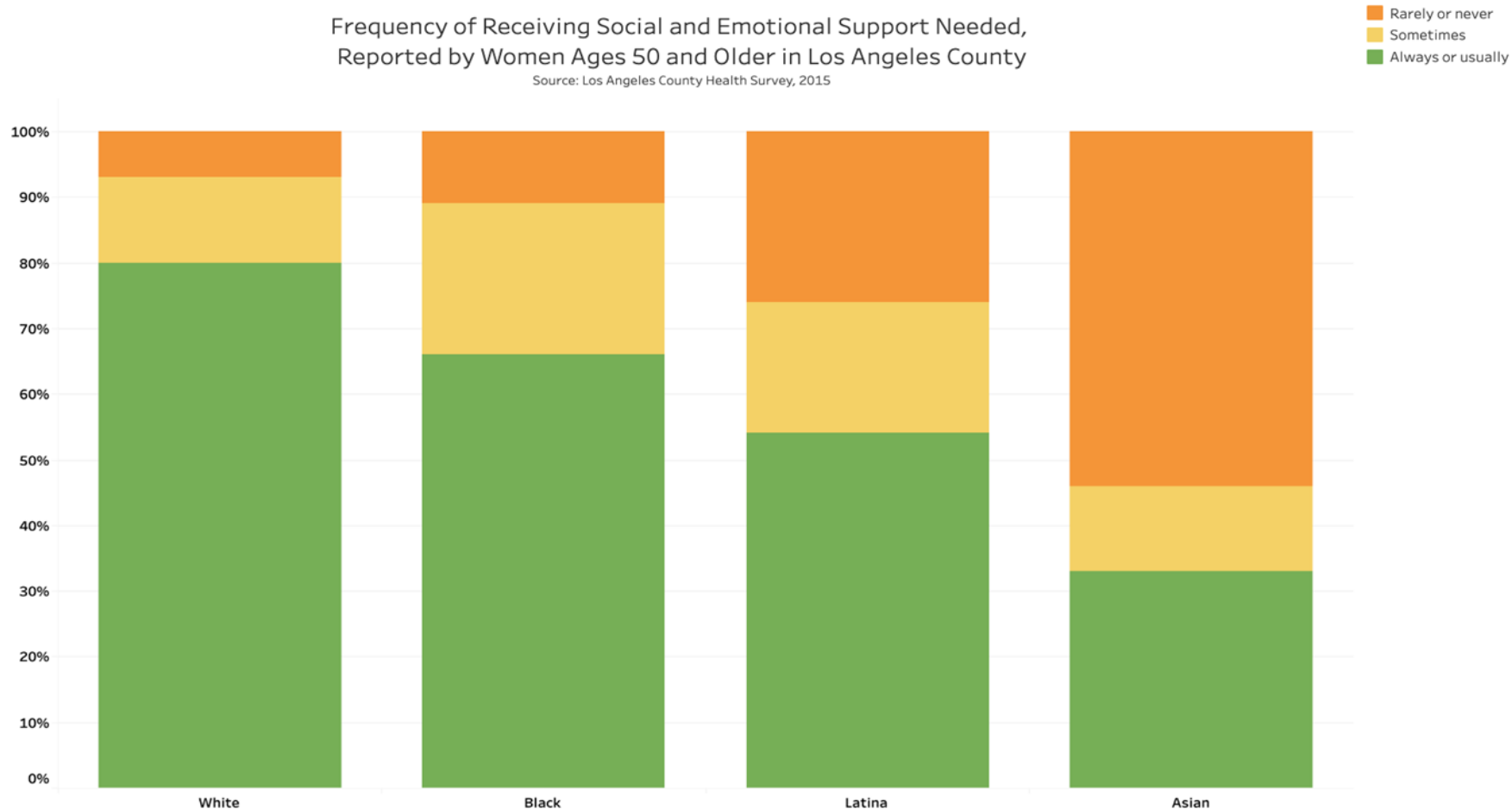
Percent of Seniors (65 years & older) Living Alone (without family members) Below 150% of Poverty Line, L.A. County, 2018



Note: Data reflect a 2014 through 2018 average.

Isolation & lack of support for LA County Older Women

Women of color 50 and over report rarely or never receiving the social and emotional support they need at a high rate, compared to white women.

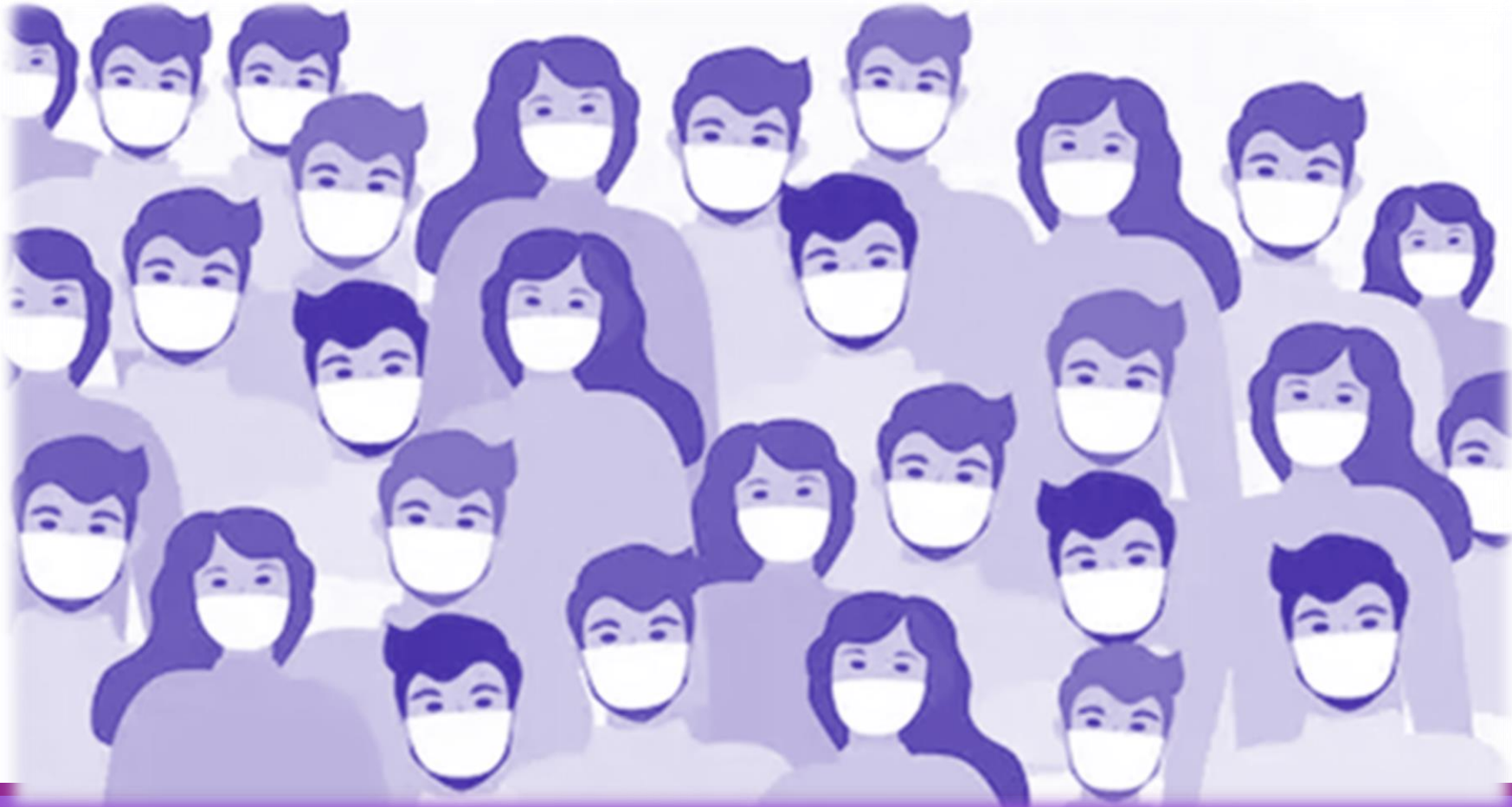


Panelist Q & A

LA County Departments - Listening Panel Q&A

- **Workforce Development, Aging and Community Services – WDACS**
 - Anna Avdalyan, Program Manager, Area Agency On Aging
- **Department Health Services -DHS**
 - Griselda Gutierrez, MD, FACOG, Associate Medical Director, Ambulatory Care Services, Harbor-UCLA Medical Center
- **Department Mental Health – DMH**
 - Taya Varteresian DO, MS, Supervising MH Psychiatrist, GENESIS-FACTS (Geriatric Evaluation Networks Encompassing Services Intervention Support Programs)
- **Los Angeles Department of Aging – LADA**
 - Mariella Freire-Reyes, MPA, Deputy Director of Strategic Partnerships & Planning

Audience Q&A From the Chat



Contact the panelist & organizations

- **Betsy Butler**- Chair of the *California Commission on Aging*

EMAIL: ccoa@ccoa.ca.gov

WEB: www.ccoa.ca.gov

CCoA

California Commission on Aging
... a citizens voice within government

- **Sarah Dusseault**- Commissioner- *Los Angeles Homeless Services Authority (LAHSA)*

EMAIL: Sdusseault@lahsa.org

WEB: www.lahsa.org



- **Jenna Hauss**- Director, Strategic Initiatives & Community Based Services – *ONEgeneration*

EMAIL: info@oneneration.org

WEB: www.oneneration.org



- **Adriana Mendoza**- Associate State Director- *AARP California*

EMAIL: AMendoza@aarp.org

WEB: www.aarp.org/California



- **Phyllis Willis**- Director of Senior Programs- *Watts Labor Community Action Center*

EMAIL: pwillis@wlcac.org

WEB: www.wlcac.org





CLOSING REMARKS

WGI Executive Director

Abbe Land

Website

lacounty.gov/wgi/

Social Media: Facebook, Instagram, Twitter:
[@LACWGI](#)